

# HUMBOLDT COUNTY

T.47N. R.29E.

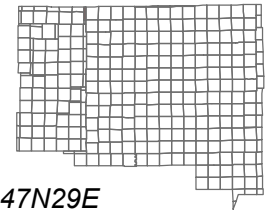
NOTE: This plat is for assessment purposes only and does not represent a survey of the lands on this plat.



Map Prepared by:  
HUMBOLDT COUNTY ASSESSOR'S OFFICE  
WINNEMUCCA, NEVADA 89445

2-4

1"=4,000'  
M.D.B. & M.



06	05	04	03	02	01
07	08	09	10	11	12
18	17	16	15	14	13
19	20	21	22	23	24
30	29	28	27	26	25
31	32	33	34	35	36

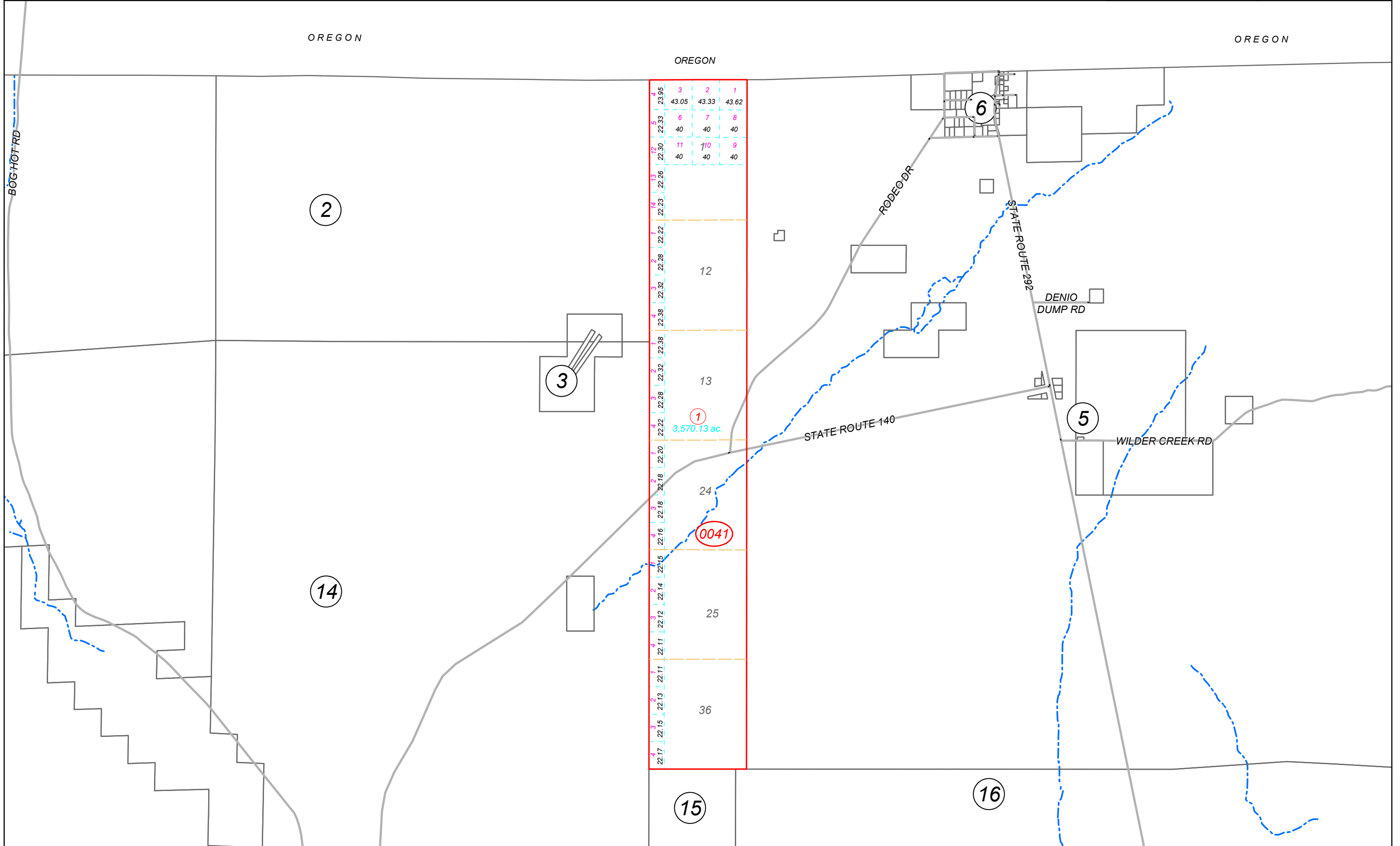


47N29E

OREGON

OREGON

OREGON



4	3	2	1
23.95	43.05	43.33	43.62
5	6	7	8
22.33	40	40	40
12	11	10	9
22.30	40	40	40
13			
22.26			
14			
22.23			
1			
22.22			
2			
22.28			
3			
22.30			
4			
22.38			
1			
22.38			
2			
22.32			
3			
22.28			
4			
22.22			
1			
22.20			
2			
22.18			
3			
22.18			
4			
22.16			
1			
22.15			
2			
22.14			
3			
22.12			
4			
22.11			
1			
22.11			
2			
22.13			
3			
22.15			
4			
22.17			