

06	05	04	03	02	01
07	08	09	10	11	12
18	17	16	15	14	13
19	20	21	22	23	24
30	29	28	27	26	25
31	32	33	34	35	36



HUMBOLDT COUNTY

T.43N. R.44E.

NOTE: This plat is for assessment purposes only and does not represent a survey of the lands on this plat.

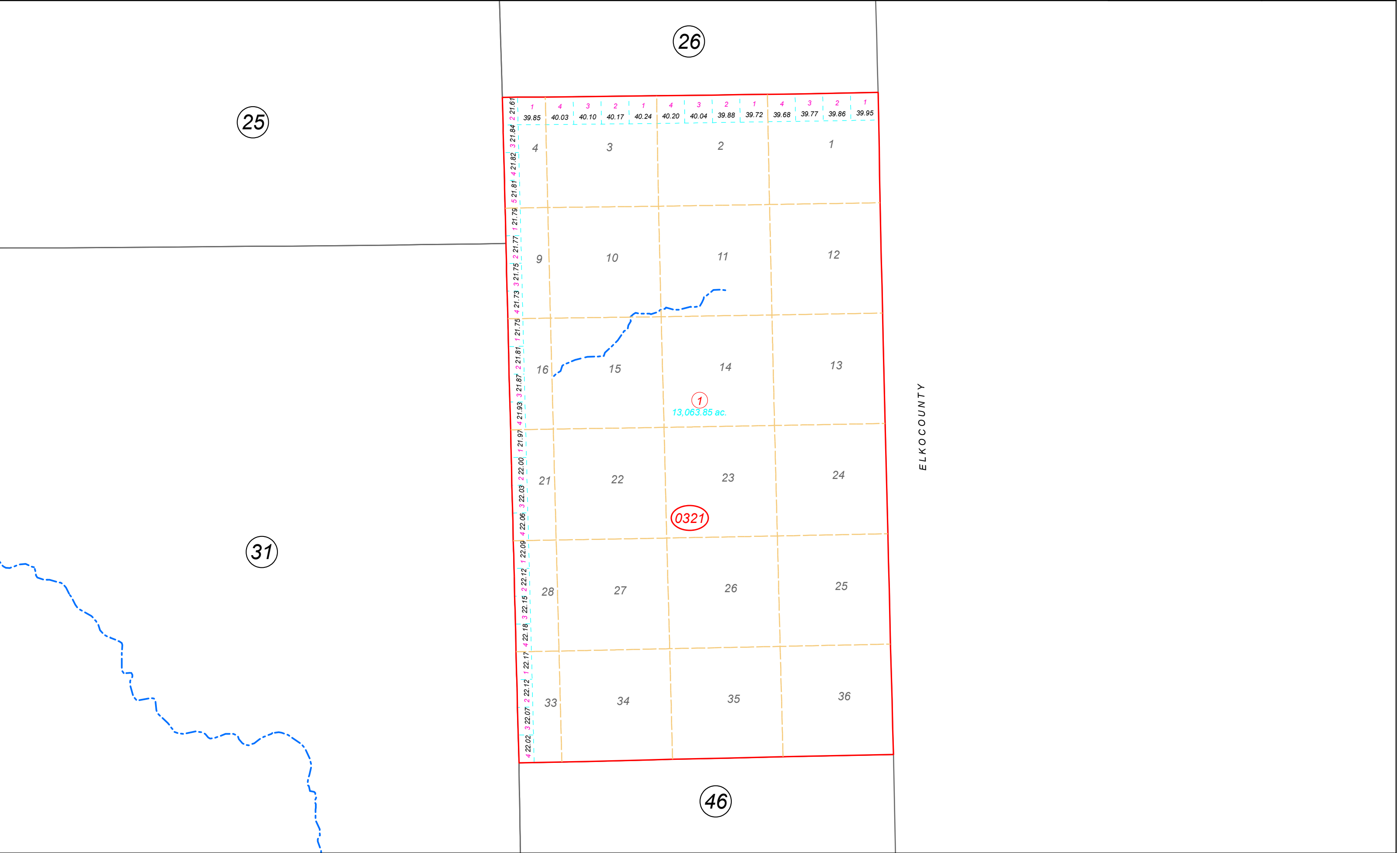


Map Prepared by:
HUMBOLDT COUNTY ASSESSOR'S OFFICE
WINNEMUCCA, NEVADA 89445

4-32

1"=4,000'
M.D.B. & M.

43N44E



25

26

31

46

ELKOCOUNTY

	1 39.85	4 40.03	3 40.10	2 40.17	1 40.24	4 40.20	3 40.04	2 39.88	1 39.72	4 39.68	3 39.77	2 39.86	1 39.95
4			3					2					1
9			10					11					12
16			15					14					13
21			22					23					24
28			27					26					25
33			34					35					36

1
13,063.85 ac.

0321