

HUMBOLDT COUNTY

T.42N. R.39E.

NOTE: This plat is for assessment purposes only and does not represent a survey of the lands on this plat.

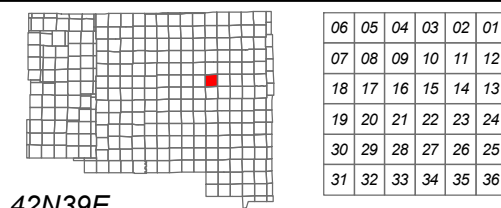


Map Prepared by:
HUMBOLDT COUNTY ASSESSOR'S OFFICE
WINNEMUCCA, NEVADA 89445

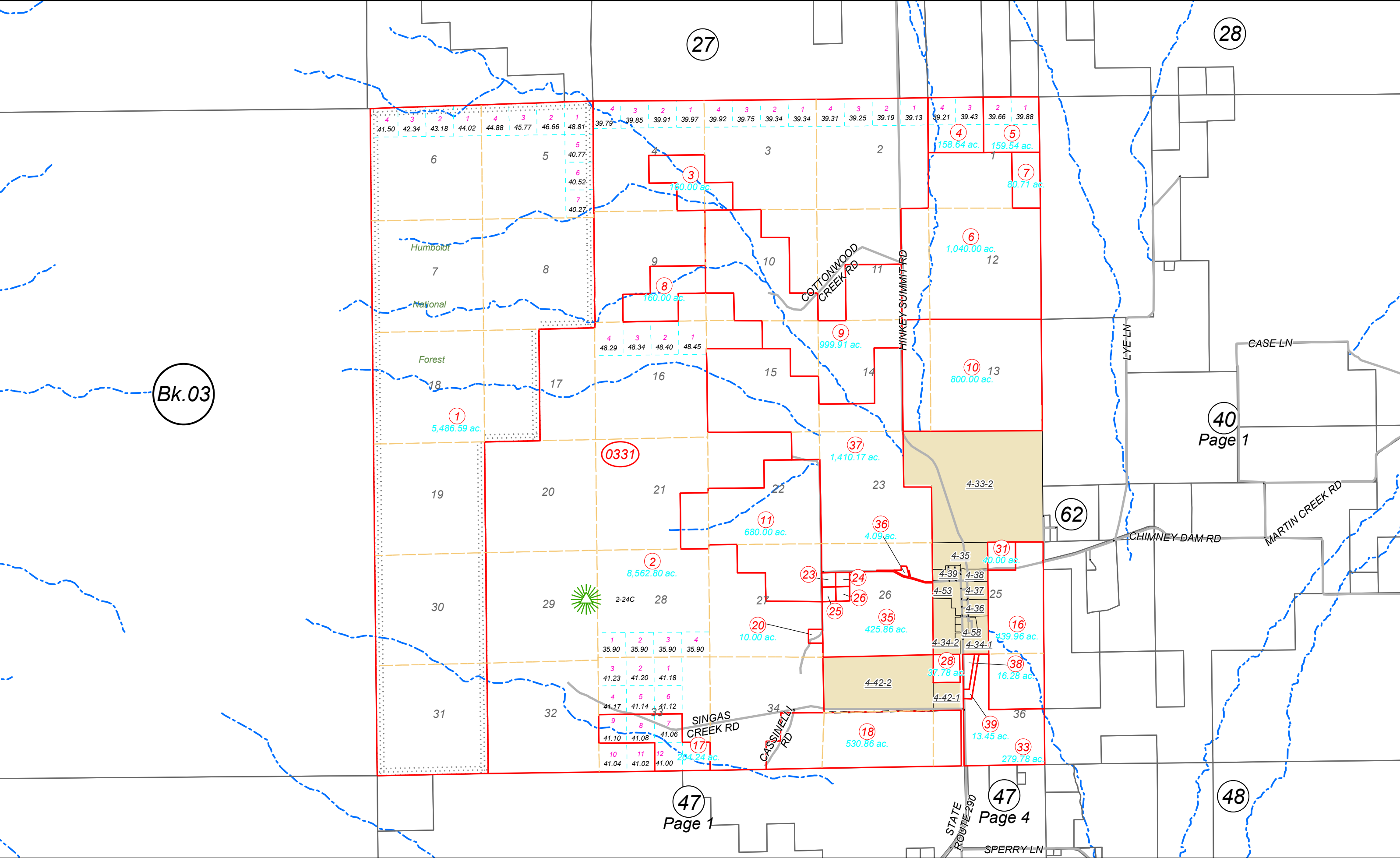
4-33

Page 1 of 2

1"=4,000'
M.D.B. & M.



42N39E



Bk.03

40
Page 1

47
Page 1

47
Page 4

48

STATE ROUTE 290

SPERRY LN