

06	05	04	03	02	01
07	08	09	10	11	12
18	17	16	15	14	13
19	20	21	22	23	24
30	29	28	27	26	25
31	32	33	34	35	36



# HUMBOLDT COUNTY

PT. N1/2 NW1/4 SEC. 25 T.42N. R.39E.

Paradise Valley

NOTE: This plat is for assessment purposes only and does not represent a survey of the lands on this plat.



Map Prepared by:  
HUMBOLDT COUNTY ASSESSOR'S OFFICE  
WINNEMUCCA, NEVADA 89445

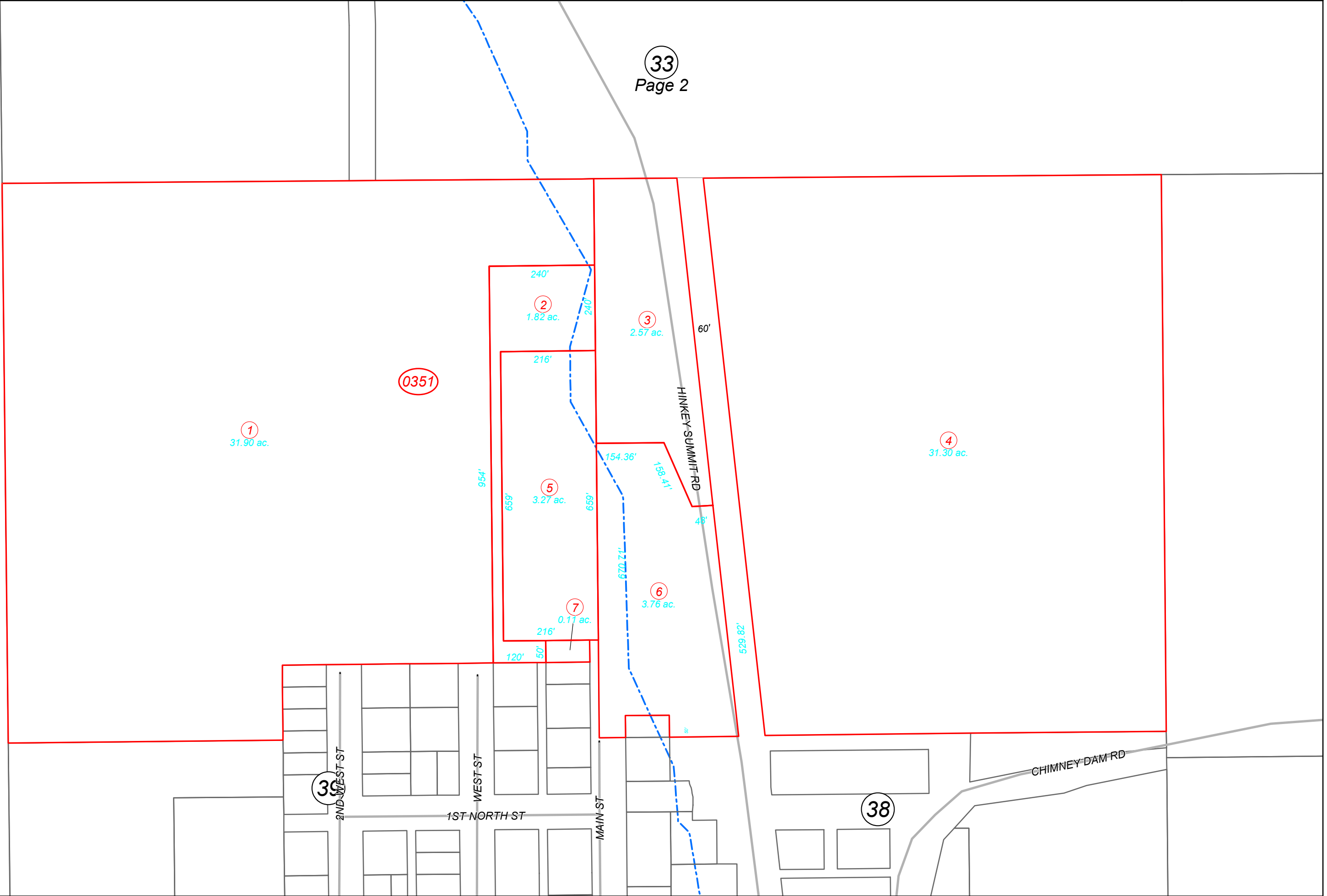
# 4-35

1"=200'  
M.D.B. & M.

42N39E

33  
Page 2

33  
Page 1



39

38