

HUMBOLDT COUNTY

NE1/4 SW1/4 SEC. 25 T.42N. R.39E.

Paradise Valley

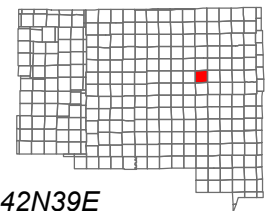
NOTE: This plat is for assessment purposes only and does not represent a survey of the lands on this plat.



Map Prepared by:  
HUMBOLDT COUNTY ASSESSOR'S OFFICE  
WINNEMUCCA, NEVADA 89445

4-36

1"=100'  
M.D.B. & M.

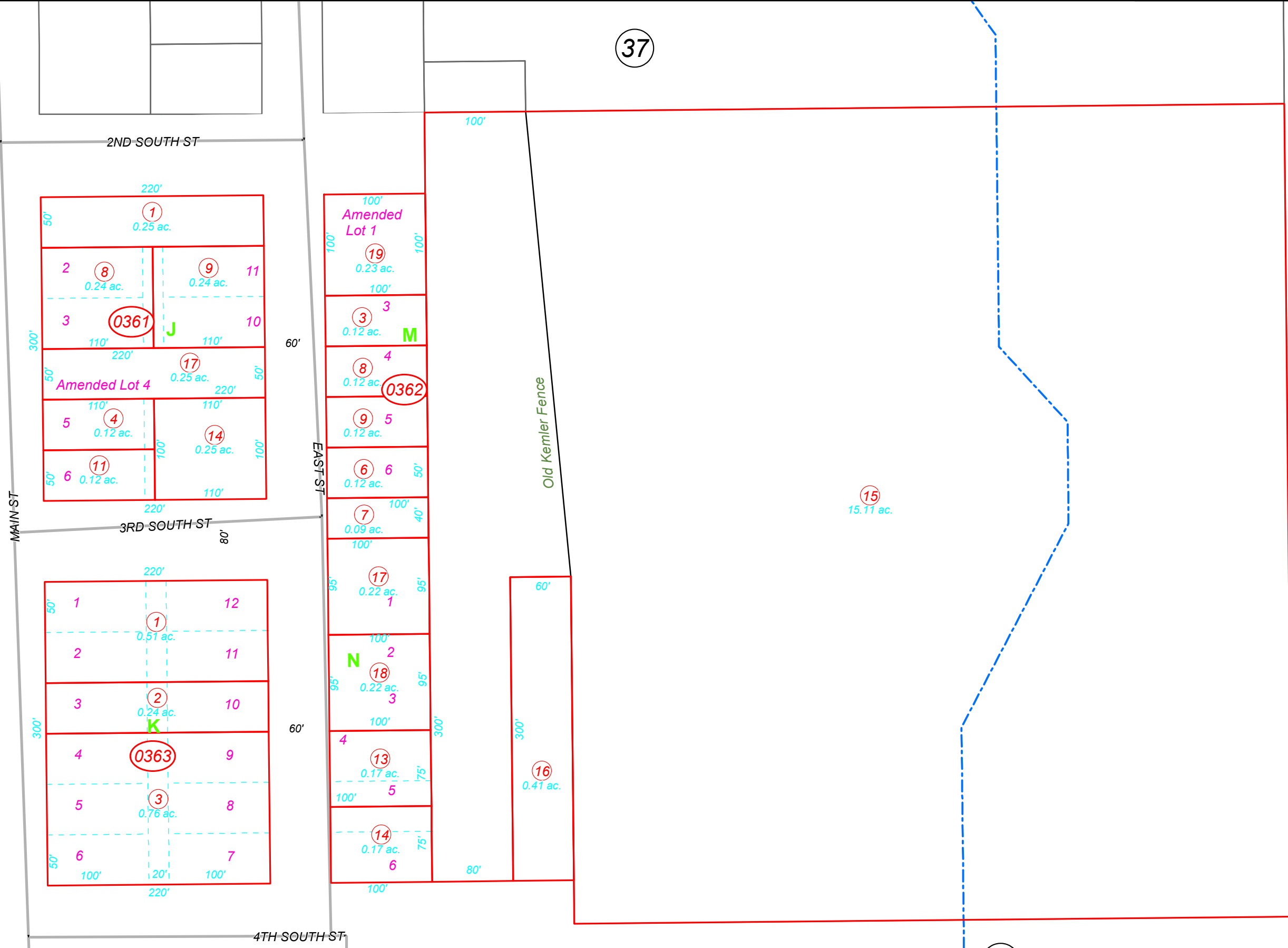


06	05	04	03	02	01
07	08	09	10	11	12
18	17	16	15	14	13
19	20	21	22	23	24
30	29	28	27	26	25
31	32	33	34	35	36



42N39E

37



53

33  
Page 1

34  
Page 2

34  
Page 1

58