

HUMBOLDT COUNTY

T.39N. R.35E.

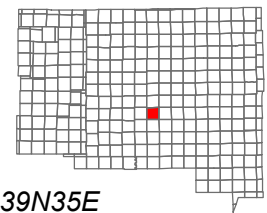
NOTE: This plat is for assessment purposes only and does not represent a survey of the lands on this plat.



Map Prepared by:
HUMBOLDT COUNTY ASSESSOR'S OFFICE
WINNEMUCCA, NEVADA 89445

5-14

1"=4,000'
M.D.B. & M.



06	05	04	03	02	01
07	08	09	10	11	12
18	17	16	15	14	13
19	20	21	22	23	24
30	29	28	27	26	25
31	32	33	34	35	36



39N35E

6

7

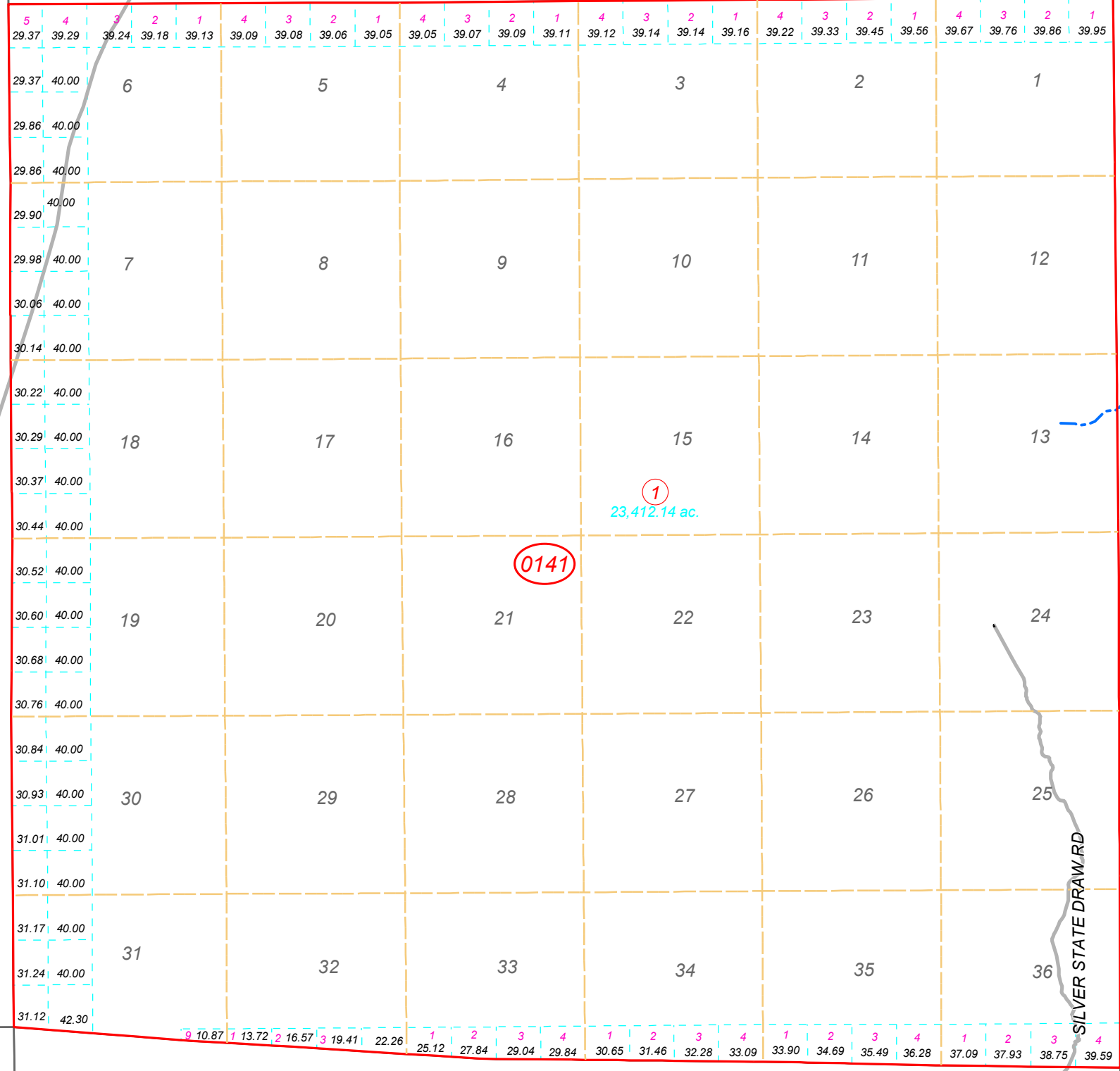
8

13

15

SOD HOUSE RD

SILVER STATE DRAW RD



20
Page 1

21
Page 1

22
Page 1