

HUMBOLDT COUNTY

T.38N. R.34E.

NOTE: This plat is for assessment purposes only and does not represent a survey of the lands on this plat.



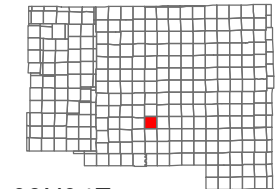
Map Prepared by:
HUMBOLDT COUNTY ASSESSOR'S OFFICE
WINNEMUCCA, NEVADA 89445

5-20

Page 1 of 2

1"=4,000'

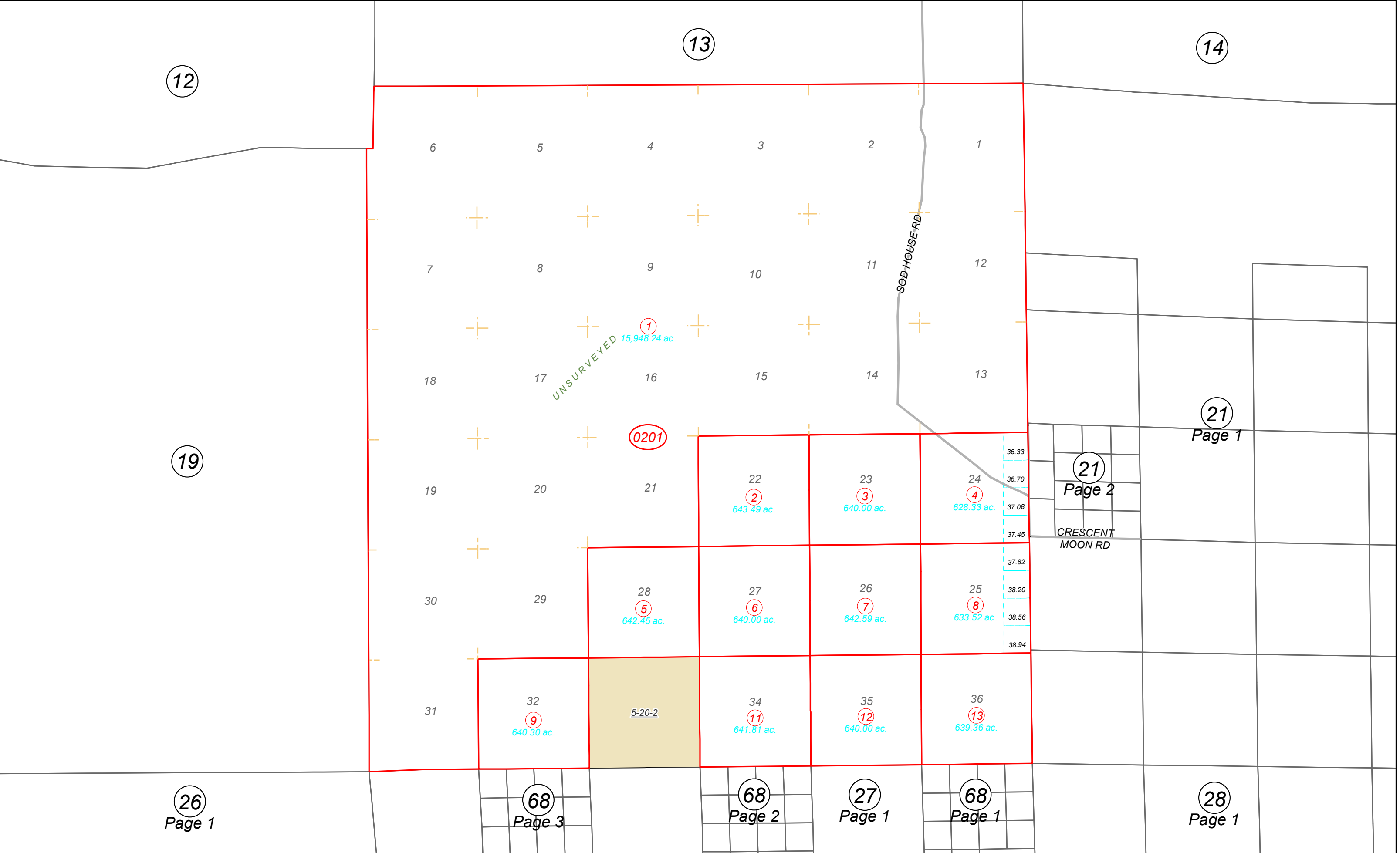
M.D.B. & M.



06	05	04	03	02	01
07	08	09	10	11	12
18	17	16	15	14	13
19	20	21	22	23	24
30	29	28	27	26	25
31	32	33	34	35	36



38N34E



12

13

14

19

21

Page 1

21

Page 2

26

Page 1

68

Page 3

68

Page 2

27

Page 1

68

Page 1

28

Page 1

6

5

4

3

2

1

7

8

9

10

11

12

18

17

16

15

14

13

19

20

21

22

2
643.49 ac.

23

3
640.00 ac.

24

4
628.33 ac.

30

29

28

5
642.45 ac.

27

6
640.00 ac.

26

7
642.59 ac.

25

8
633.52 ac.

31

32

9
640.30 ac.

5-20-2

34

11
641.81 ac.

35

12
640.00 ac.

36

13
639.36 ac.

36.33
36.70
37.08
37.45
37.82
38.20
38.56
38.94

CRESCENT
MOON RD

SOD HOUSE RD

UNSURVEYED
15,948.24 ac.

0201