

HUMBOLDT COUNTY

T.35N. R.33E.

NOTE: This plat is for assessment purposes only and does not represent a survey of the lands on this plat.



Map Prepared by:
HUMBOLDT COUNTY ASSESSOR'S OFFICE
WINNEMUCCA, NEVADA 89445

5-41

Page 1 of 4

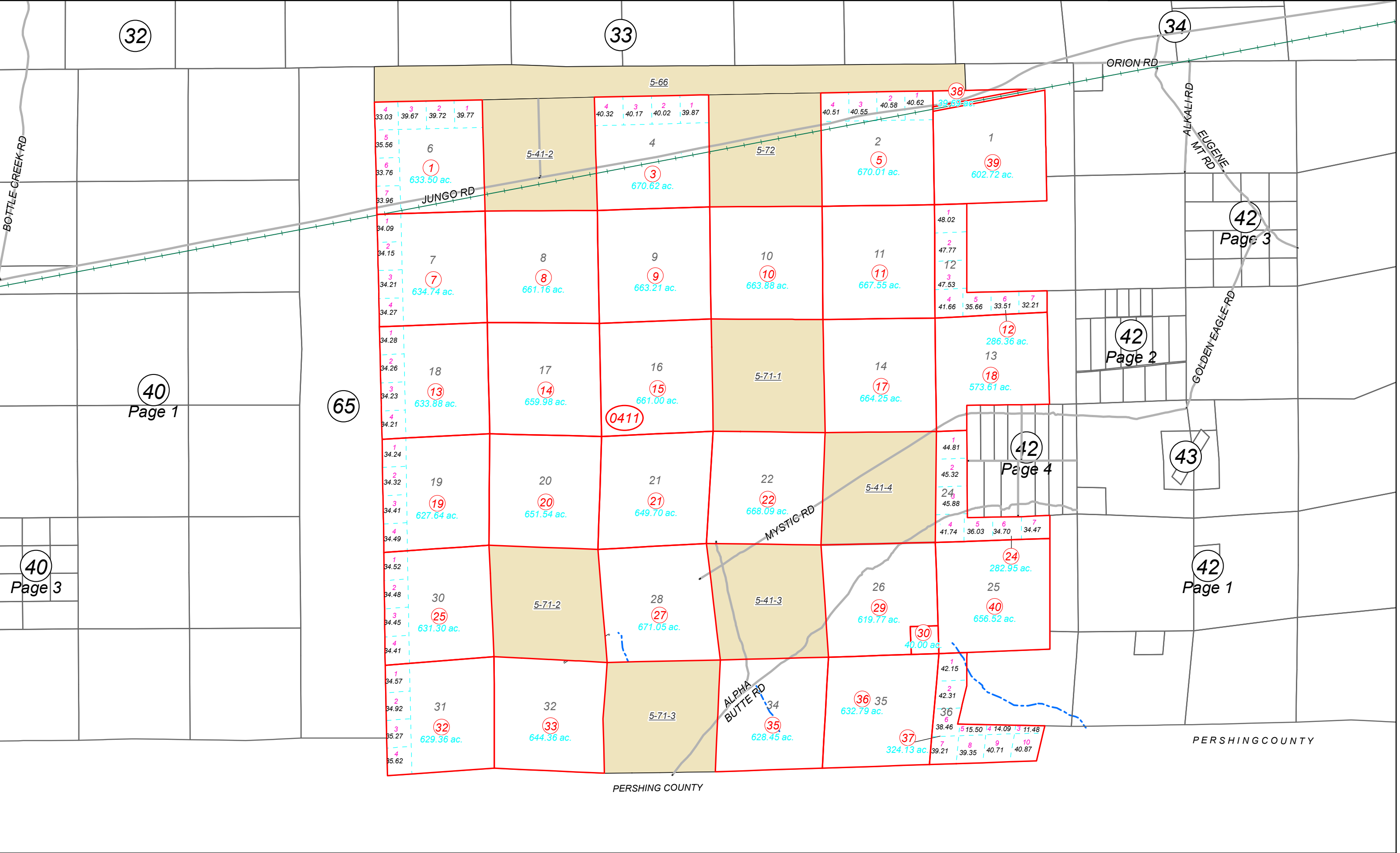
1"=4,000'

M.D.B. & M.

06	05	04	03	02	01
07	08	09	10	11	12
18	17	16	15	14	13
19	20	21	22	23	24
30	29	28	27	26	25
31	32	33	34	35	36



35N33E



32

33

34

40

65

42

42

42

42

Page 1

Page 2

Page 3

Page 4

40

Page 3

PERSHING COUNTY

PERSHING COUNTY

Map details including parcel numbers (1-39), acreages (e.g., 633.50 ac., 670.62 ac., 670.01 ac., 602.72 ac., 634.74 ac., 661.16 ac., 663.21 ac., 663.88 ac., 667.55 ac., 286.36 ac., 573.61 ac., 633.88 ac., 659.98 ac., 661.00 ac., 664.25 ac., 34.24 ac., 44.81 ac., 45.32 ac., 24 ac., 45.88 ac., 41.74 ac., 36.03 ac., 34.70 ac., 34.47 ac., 282.95 ac., 619.77 ac., 656.52 ac., 40.00 ac., 629.36 ac., 644.36 ac., 628.45 ac., 632.79 ac., 324.13 ac.), road names (Jungo Rd, Mystic Rd, Alpha Butte Rd, Orion Rd, Golden Eagle Rd), and section numbers (5-66, 5-41-2, 5-72, 5-71-1, 5-41-4, 5-71-2, 5-41-3).