

HUMBOLDT COUNTY

T.35N. R.35E.

NOTE: This plat is for assessment purposes only and does not represent a survey of the lands on this plat.

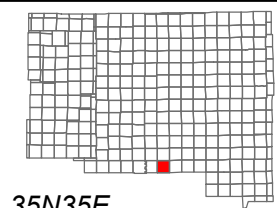


Map Prepared by:
HUMBOLDT COUNTY ASSESSOR'S OFFICE
WINNEMUCCA, NEVADA 89445

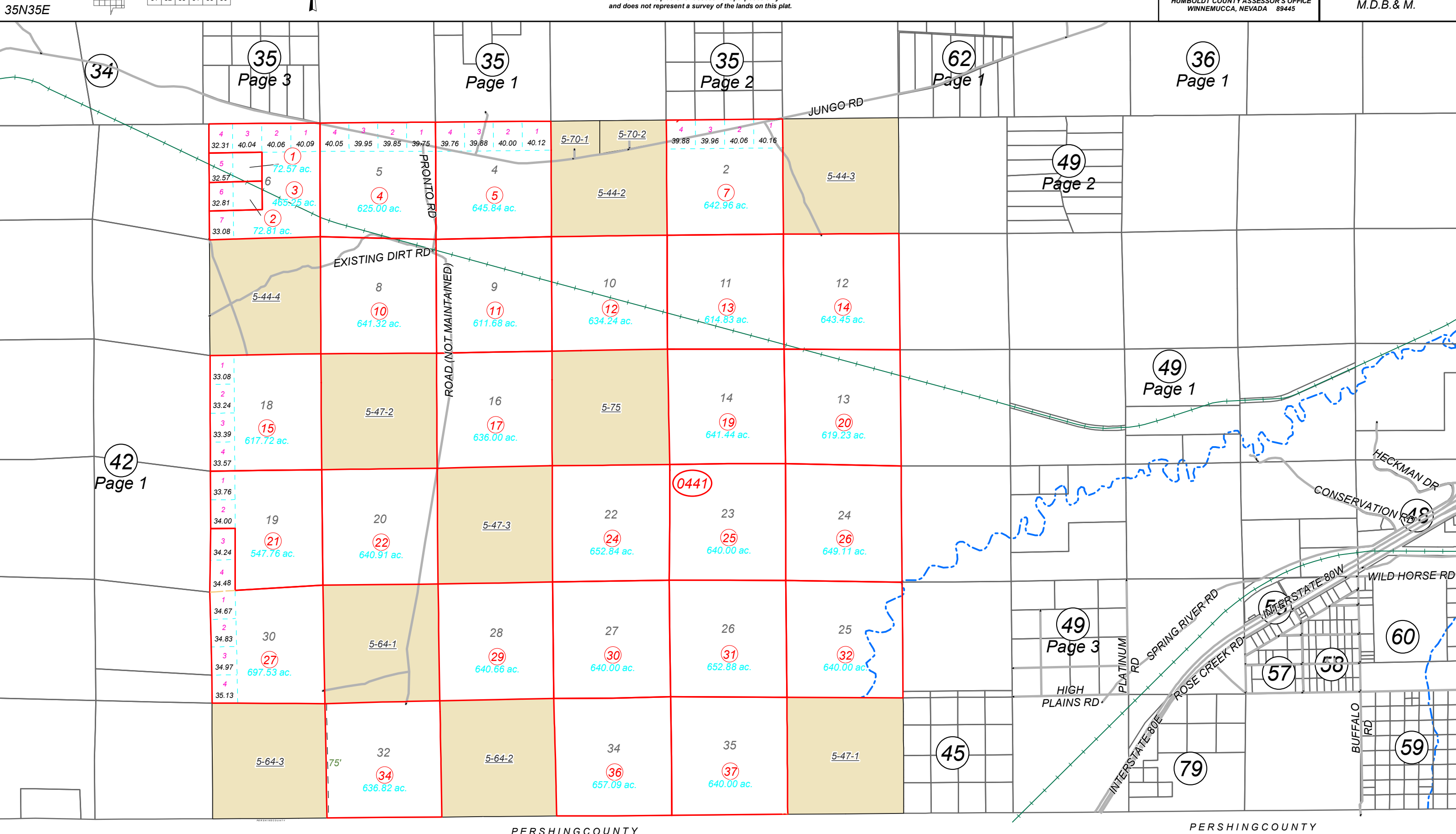
5-44

Page 1 of 4

1"=4,000'
M.D.B. & M.



06	05	04	03	02	01
07	08	09	10	11	12
18	17	16	15	14	13
19	20	21	22	23	24
30	29	28	27	26	25
31	32	33	34	35	36



PERSHING COUNTY

PERSHING COUNTY