

06	05	04	03	02	01
07	08	09	10	11	12
18	17	16	15	14	13
19	20	21	22	23	24
30	29	28	27	26	25
31	32	33	34	35	36



### HUMBOLDT COUNTY

SW1/4 SEC. 25 T.35N. R.36E.

Grass Valley Ranchos Sub. No. 2

NOTE: This plat is for assessment purposes only and does not represent a survey of the lands on this plat.



Map Prepared by:  
HUMBOLDT COUNTY ASSESSOR'S OFFICE  
WINNEMUCCA, NEVADA 89445

# 5-53

1"=300'  
M.D.B. & M.

35N36E

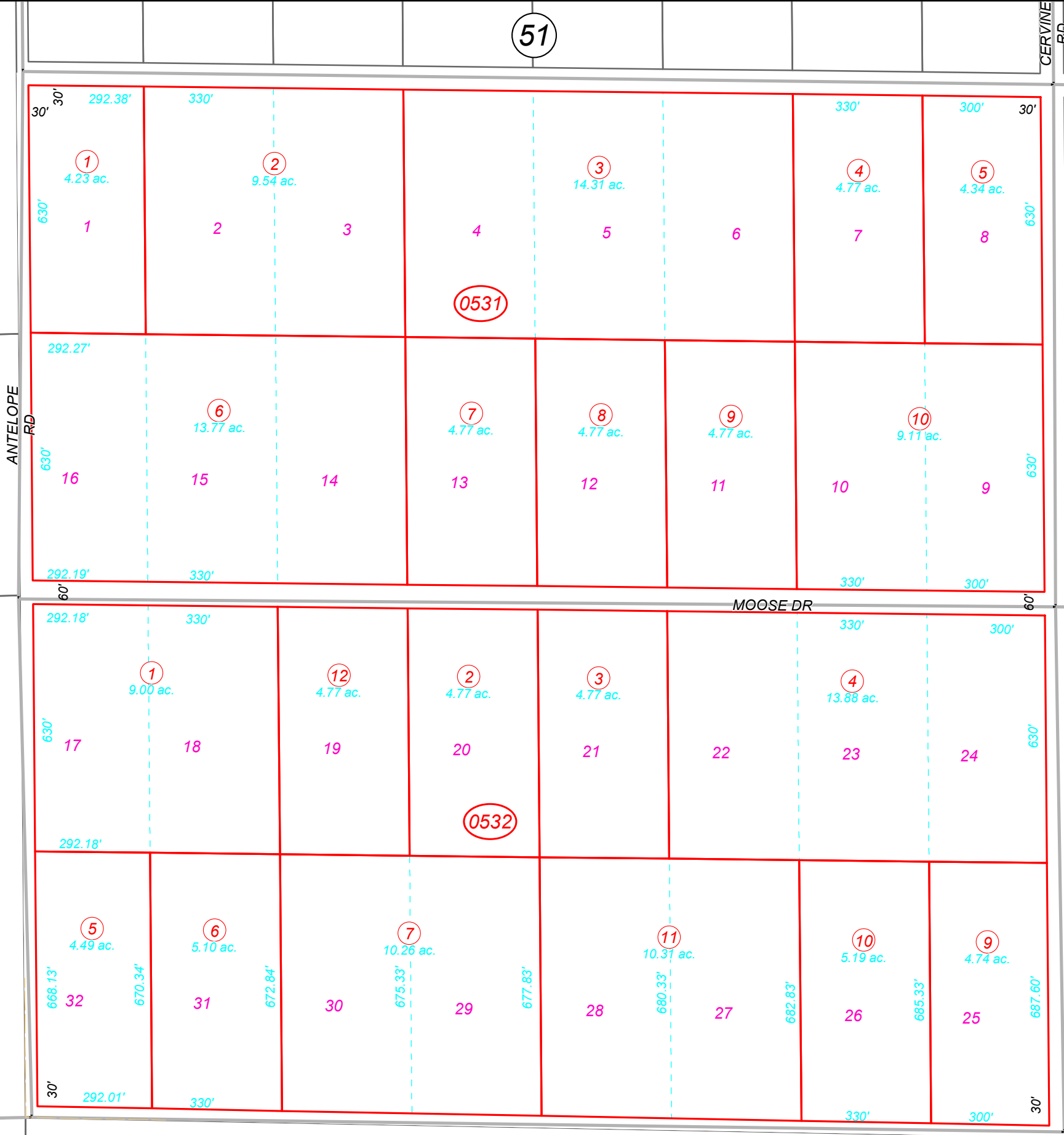
51

52

60

54

59



ANTELOPE RD

CERVINE RD

ELK ST

MOOSE DR

CORMIER BLVD