

# HUMBOLDT COUNTY

SEC. 17 T.36N. R.36E.

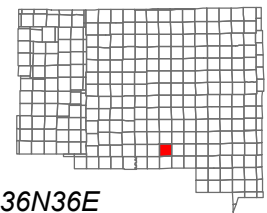
NOTE: This plat is for assessment purposes only and does not represent a survey of the lands on this plat.



Map Prepared by:  
HUMBOLDT COUNTY ASSESSOR'S OFFICE  
WINNEMUCCA, NEVADA 89445

## 5-78

1"=600'  
M.D.B. & M.

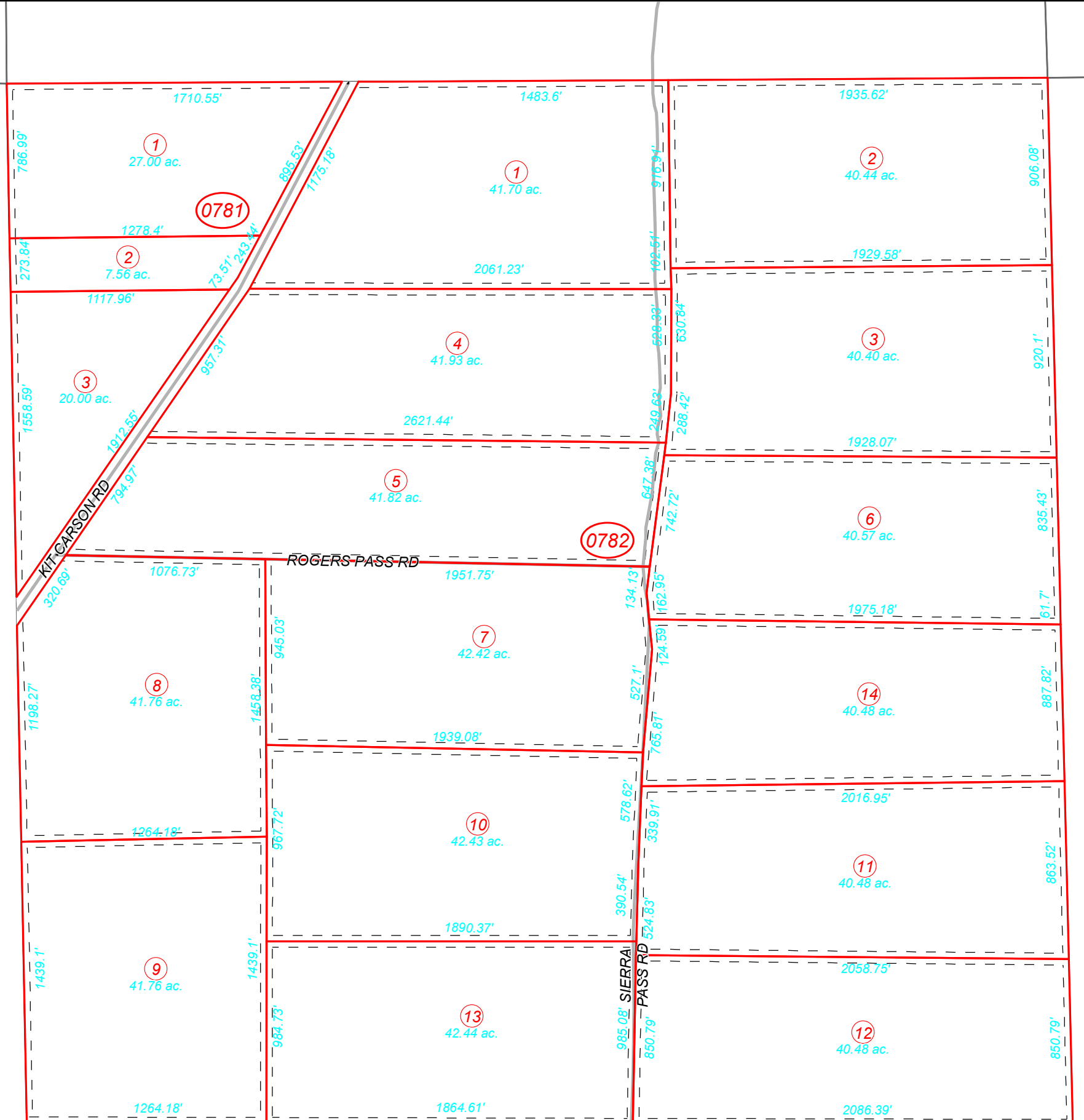


06	05	04	03	02	01
07	08	09	10	11	12
18	17	16	15	14	13
19	20	21	22	23	24
30	29	28	27	26	25
31	32	33	34	35	36



36N36E

36  
Page 1



DAYNA RD  
37  
Page 3

KAMDEN RD