

HUMBOLDT COUNTY

T.39N. R.37E.

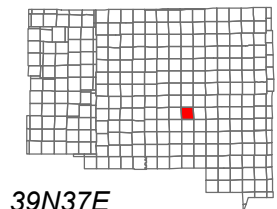
NOTE: This plat is for assessment purposes only and does not represent a survey of the lands on this plat.



Map Prepared by:
HUMBOLDT COUNTY ASSESSOR'S OFFICE
WINNEMUCCA, NEVADA 89445

6-7

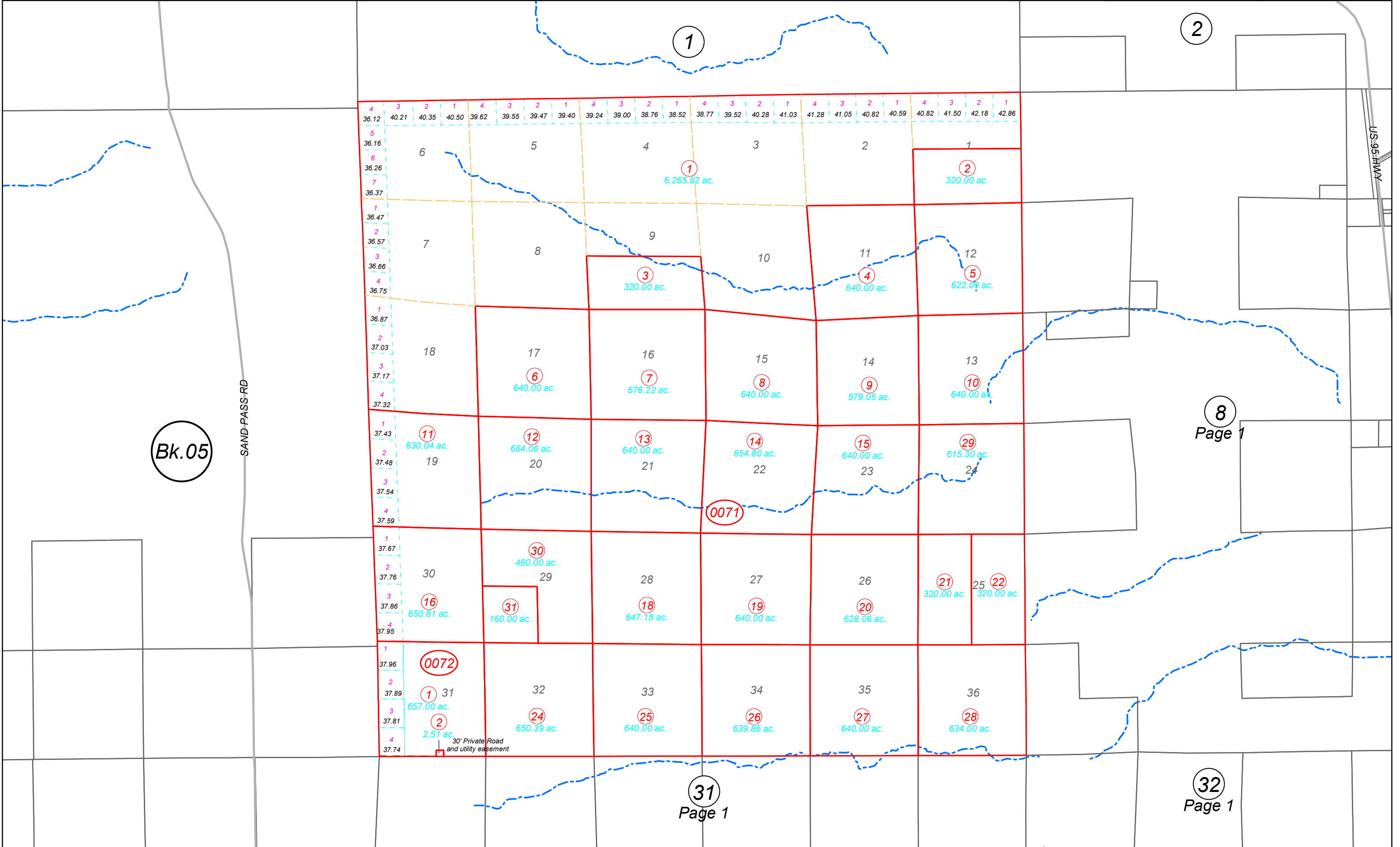
1"=4,000'
M.D.B. & M.



06	05	04	03	02	01
07	08	09	10	11	12
18	17	16	15	14	13
19	20	21	22	23	24
30	29	28	27	26	25
31	32	33	34	35	36



39N37E



Bk.05

SAND PASS RD

US 95 HWY

8
Page 1

31
Page 1

32
Page 1

30' Private Road and utility easement