

HUMBOLDT COUNTY

N1/2 SEC. 23 T.39N. R.38E.

Paradise Valley Ranchos No. 1

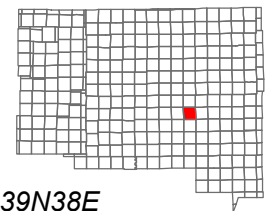
NOTE: This plat is for assessment purposes only and does not represent a survey of the lands on this plat.



Map Prepared by:
HUMBOLDT COUNTY ASSESSOR'S OFFICE
WINNEMUCCA, NEVADA 89445

6-16

1"=400'
M.D.B. & M.



06	05	04	03	02	01
07	08	09	10	11	12
18	17	16	15	14	13
19	20	21	22	23	24
30	29	28	27	26	25
31	32	33	34	35	36



39N38E

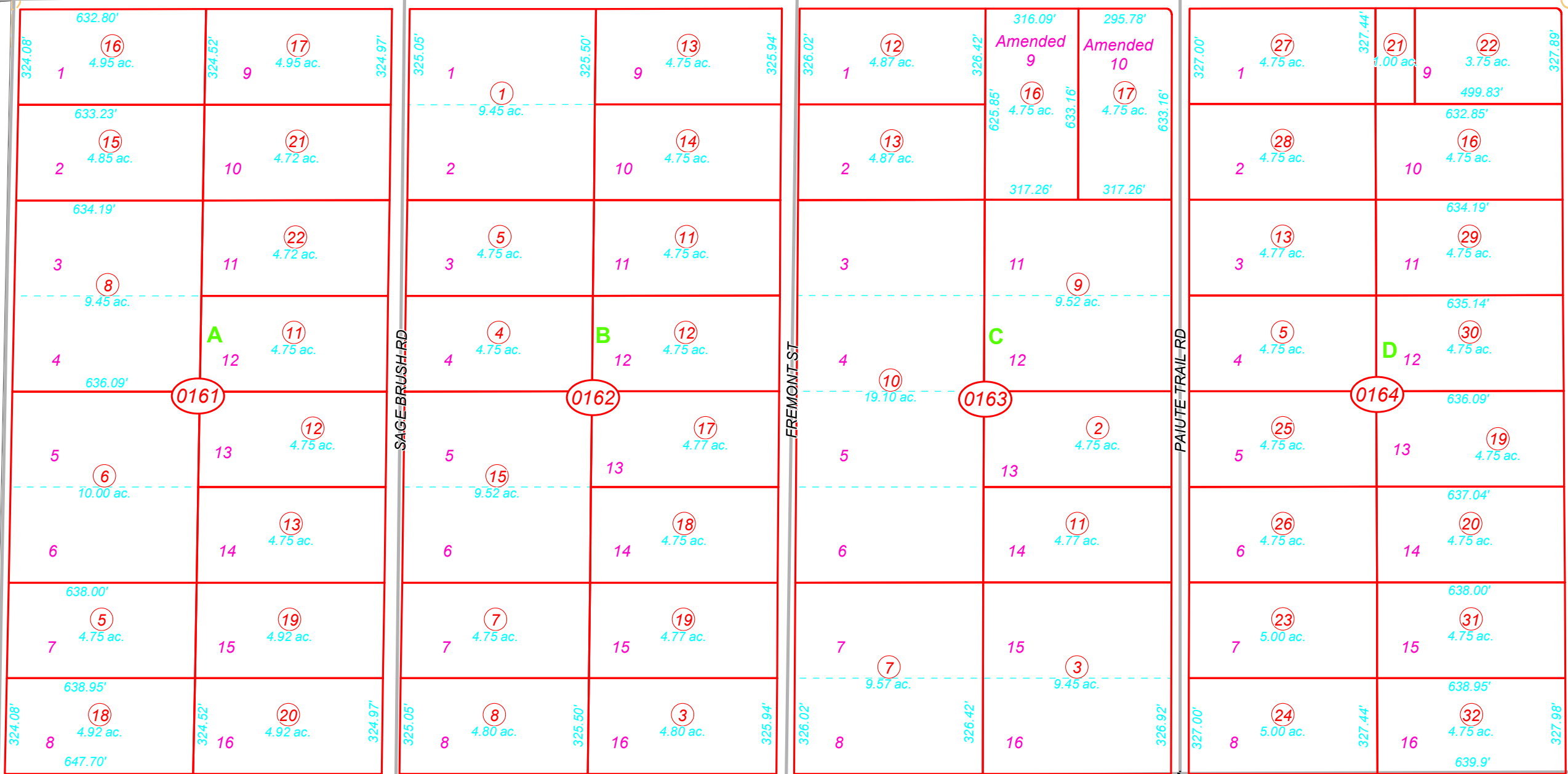
15

14

PARADISE RANCHOS DR

MOUNTAIN VIEW DR

8
Page 1



SAGE BRUSH RD

FREMONT ST

PAIUTE TRAIL RD

PIONEER DR

17

18