

HUMBOLDT COUNTY

PT. SE1/4 SEC. 16 T.37N. R.38E.

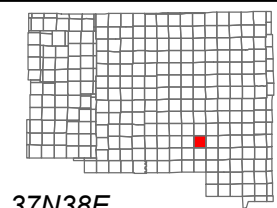
NOTE: This plat is for assessment purposes only and does not represent a survey of the lands on this plat.



Map Prepared by:
HUMBOLDT COUNTY ASSESSOR'S OFFICE
WINNEMUCCA, NEVADA 89445

6-63

1"=300'
M.D.B. & M.



06	05	04	03	02	01
07	08	09	10	11	12
18	17	16	15	14	13
19	20	21	22	23	24
30	29	28	27	26	25
31	32	33	34	35	36



37N38E

40
Page 2

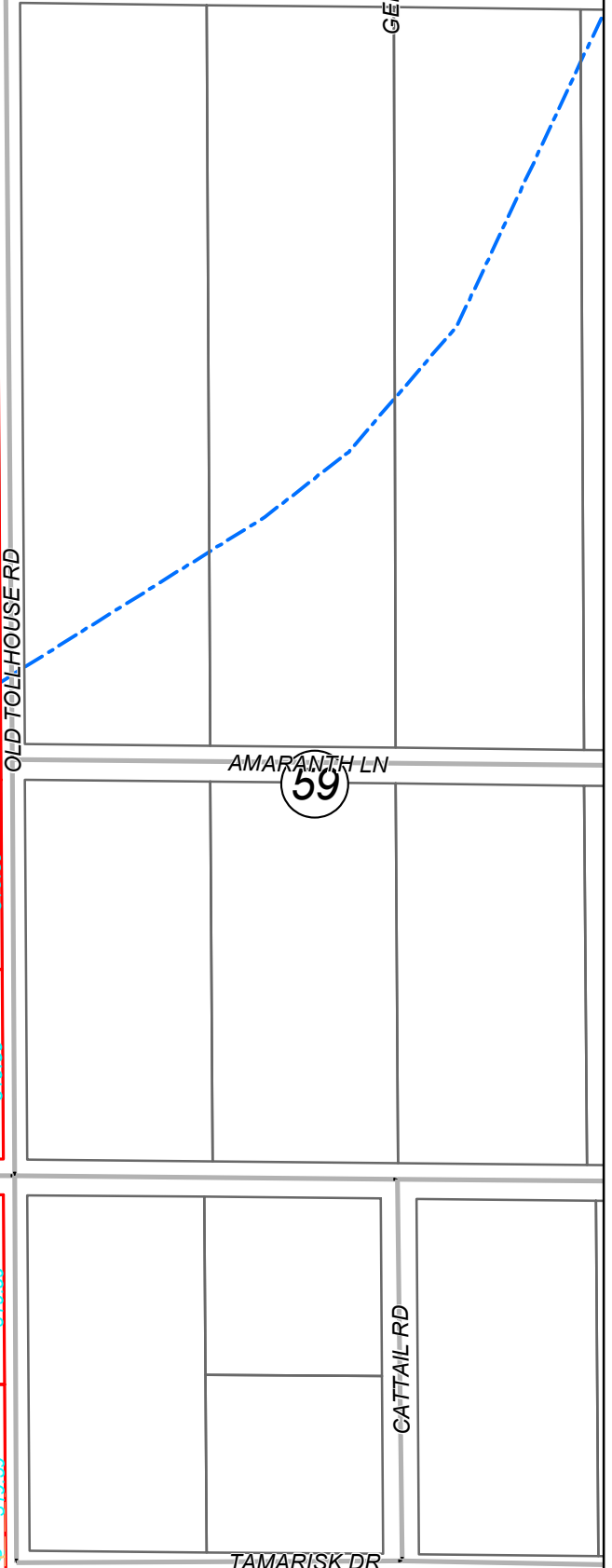
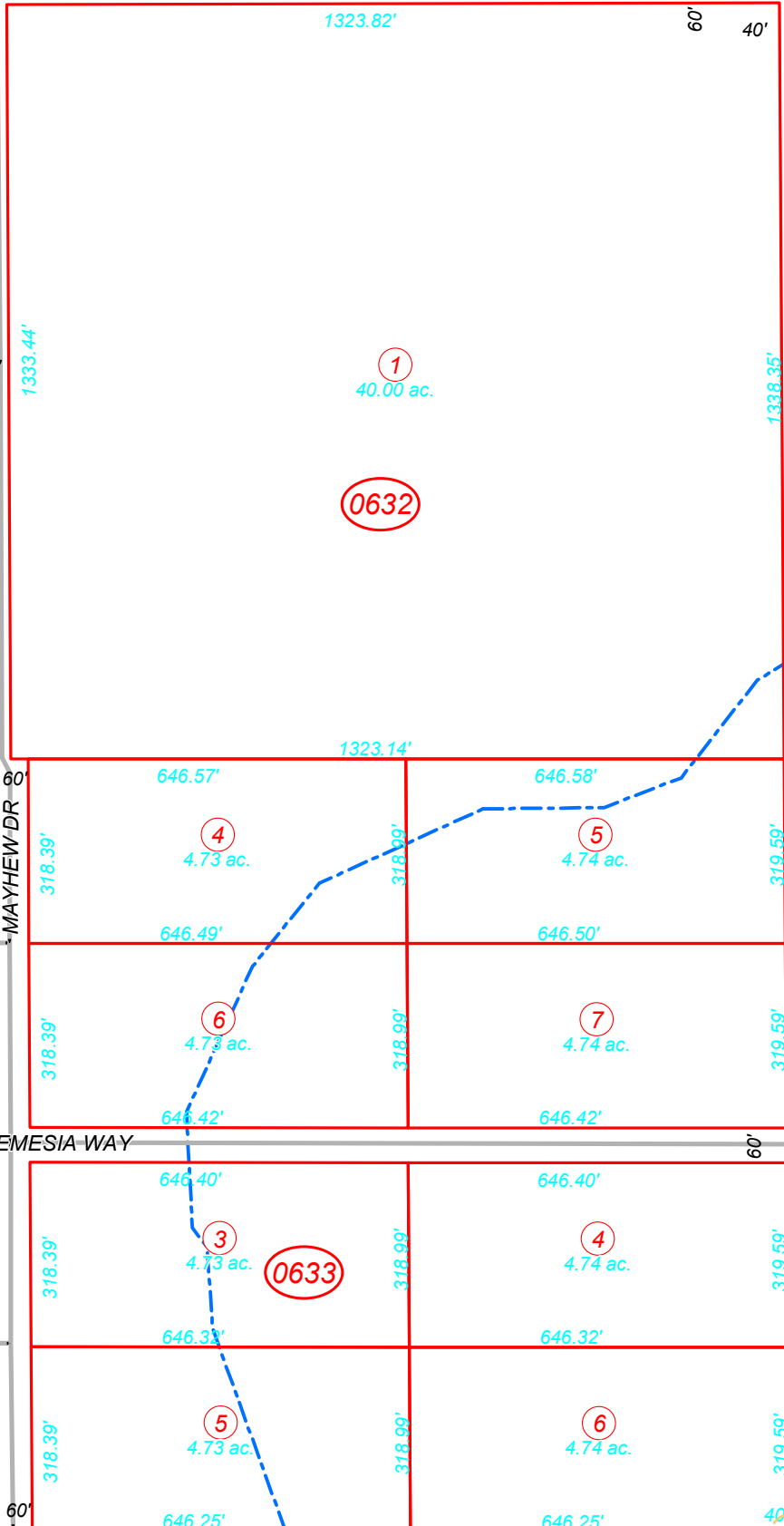
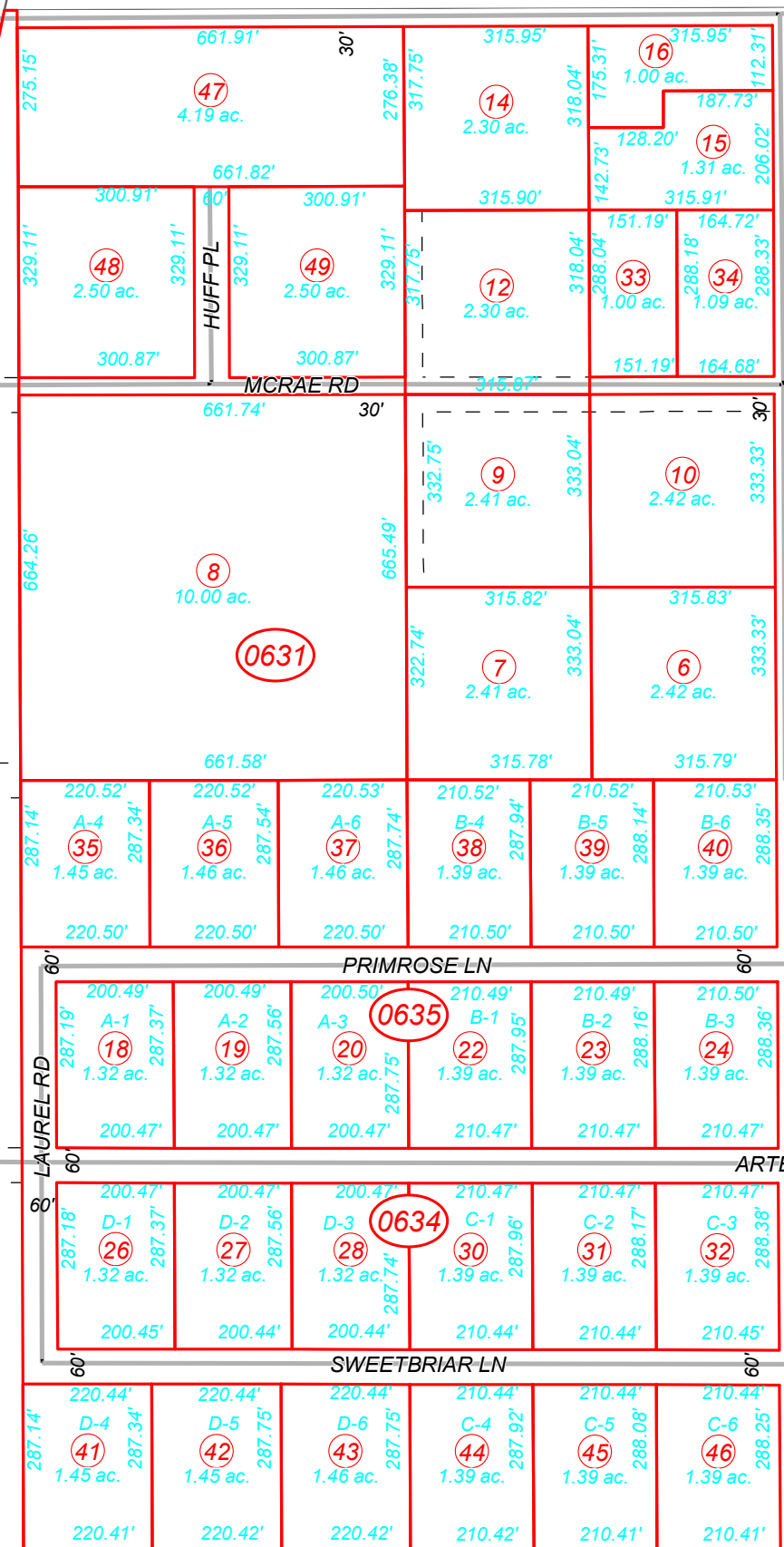
HWY-95 FRONTAGE RD
US-95 HWY

64

47

BRONCO DR

GERREID CT



51

AMARANTH LN

59

OLD TOLLHOUSE RD

MAYHEW DR

PRIMROSE LN

LAUREL RD

ARTEMESIA WAY

SWEETBRIAR LN

TAMARISK DR

CATTAIL RD

40

Page 3
NORRIS RANCH RD