

06	05	04	03	02	01
07	08	09	10	11	12
18	17	16	15	14	13
19	20	21	22	23	24
30	29	28	27	26	25
31	32	33	34	35	36



HUMBOLDT COUNTY

NW1/4 NW1/4 SEC. 14 T.36N. R.41E.

NOTE: This plat is for assessment purposes only and does not represent a survey of the lands on this plat.

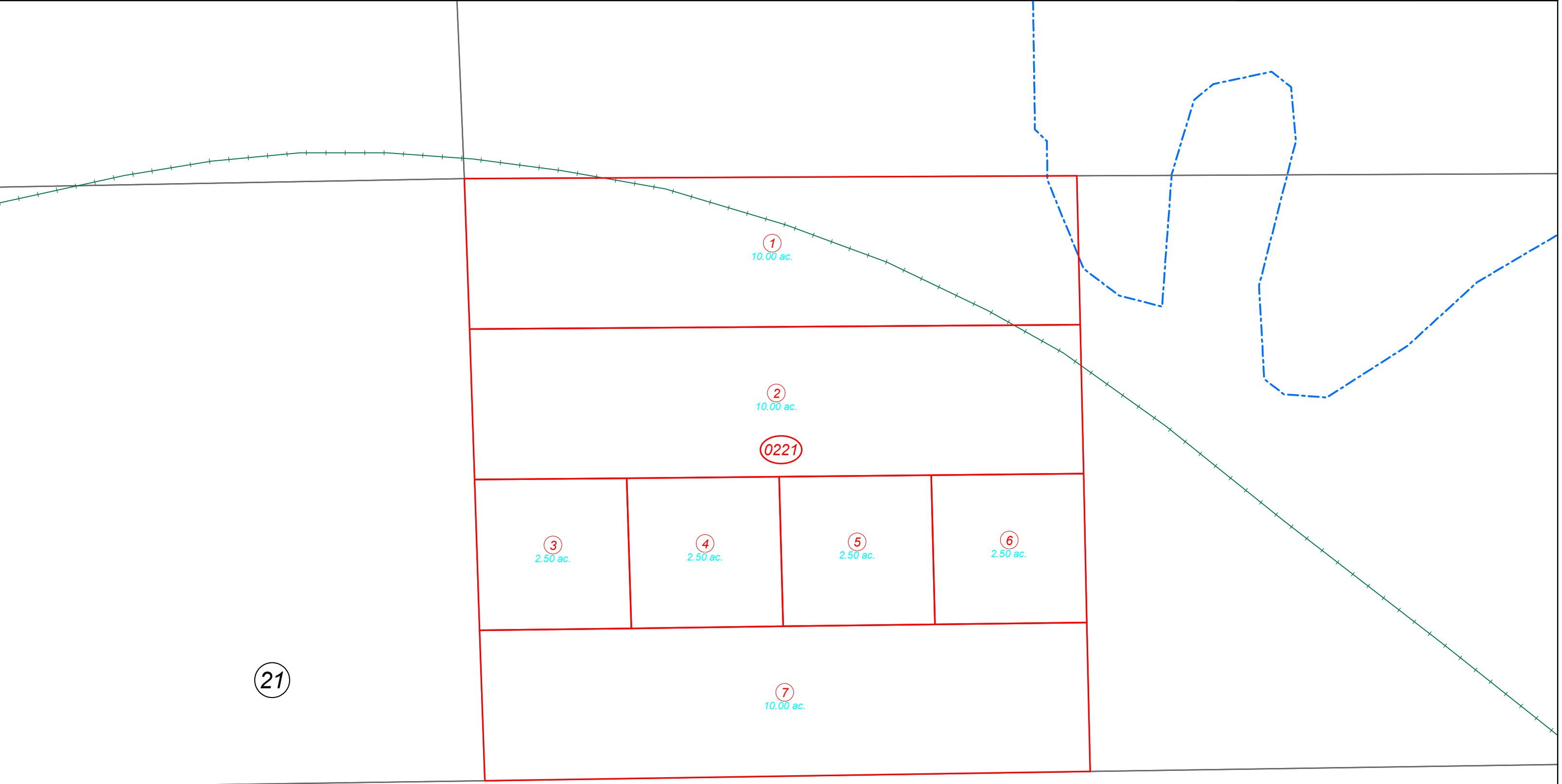


Map Prepared by:
HUMBOLDT COUNTY ASSESSOR'S OFFICE
WINNEMUCCA, NEVADA 89445

7-22

1"=200'
M.D.B. & M.

36N41E



21

1
10.00 ac.

2
10.00 ac.

221

3
2.50 ac.

4
2.50 ac.

5
2.50 ac.

6
2.50 ac.

7
10.00 ac.