

HUMBOLDT COUNTY

T.32N. R.43E.

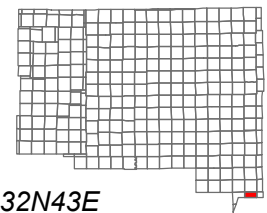
NOTE: This plat is for assessment purposes only and does not represent a survey of the lands on this plat.



Map Prepared by:
HUMBOLDT COUNTY ASSESSOR'S OFFICE
WINNEMUCCA, NEVADA 89445

7-49

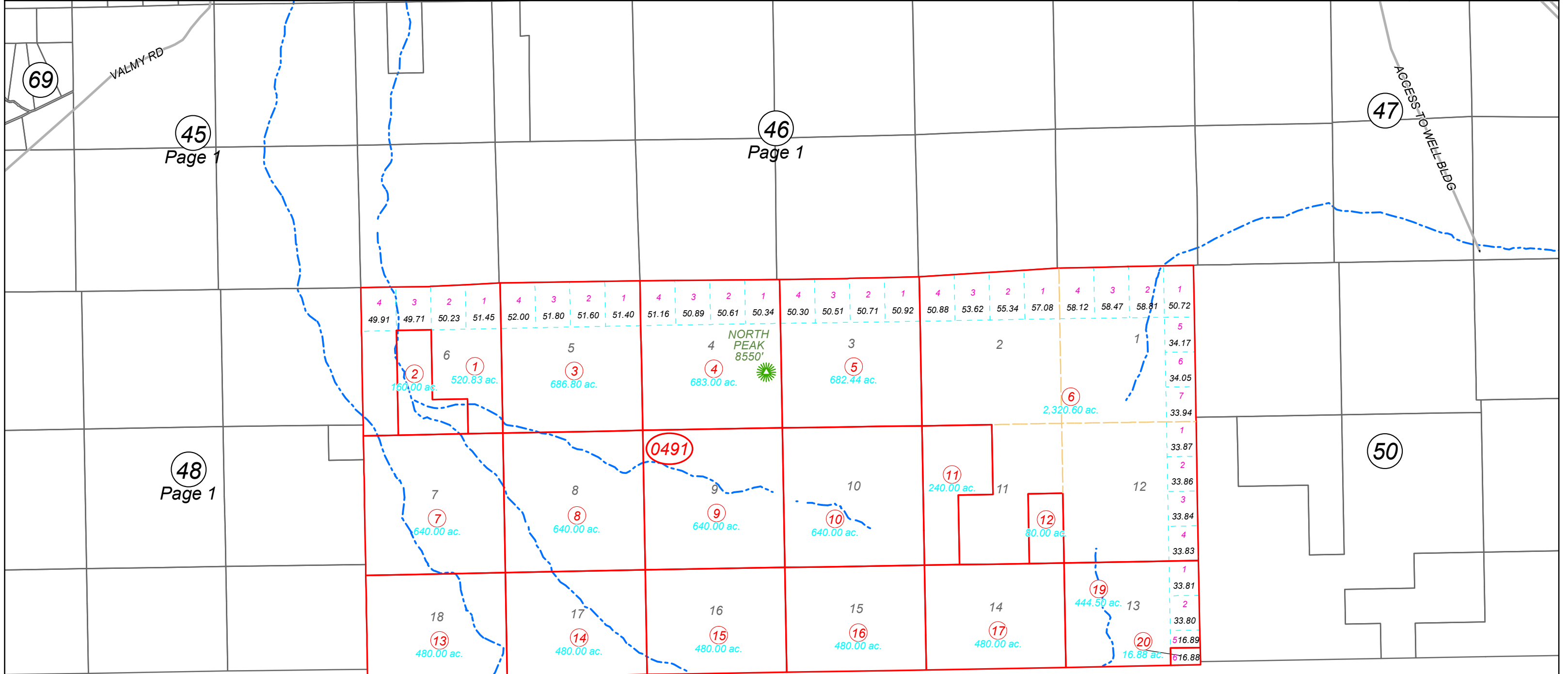
1"=3,520'
M.D.B. & M.



06	05	04	03	02	01
07	08	09	10	11	12
18	17	16	15	14	13
19	20	21	22	23	24
30	29	28	27	26	25
31	32	33	34	35	36



32N43E



45
Page 1

46
Page 1

48
Page 1

50

LANDERCOUNTY

LANDERCOUNTY

LANDERCOUNTY