

# HUMBOLDT COUNTY

T.35N. R.38E.

NOTE: This plat is for assessment purposes only and does not represent a survey of the lands on this plat.



Map Prepared by:  
HUMBOLDT COUNTY ASSESSOR'S OFFICE  
WINNEMUCCA, NEVADA 89445

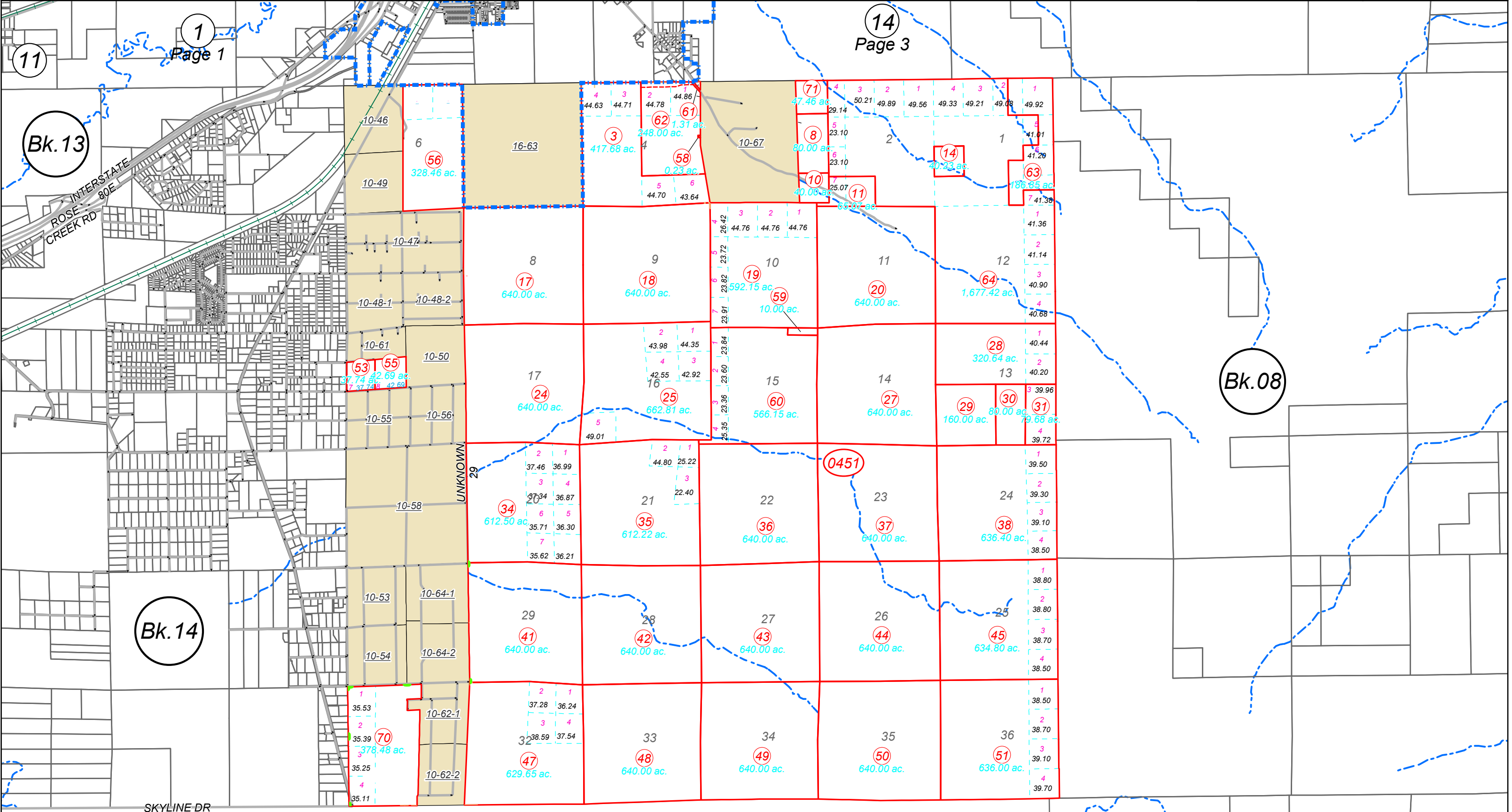
## 10-45

1"=4,000'  
M.D.B. & M.

06	05	04	03	02	01
07	08	09	10	11	12
18	17	16	15	14	13
19	20	21	22	23	24
30	29	28	27	26	25
31	32	33	34	35	36



35N38E



SHING COUNTY

PERSHING COUNTY