

HUMBOLDT COUNTY

SE1/4 SEC. 18 T.35N. R.38E.

Canyon Run Dev.

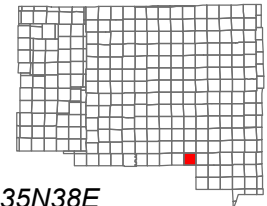
NOTE: This plat is for assessment purposes only and does not represent a survey of the lands on this plat.



Map Prepared by:
HUMBOLDT COUNTY ASSESSOR'S OFFICE
WINNEMUCCA, NEVADA 89445

10-56

1"=300'
M.D.B. & M.



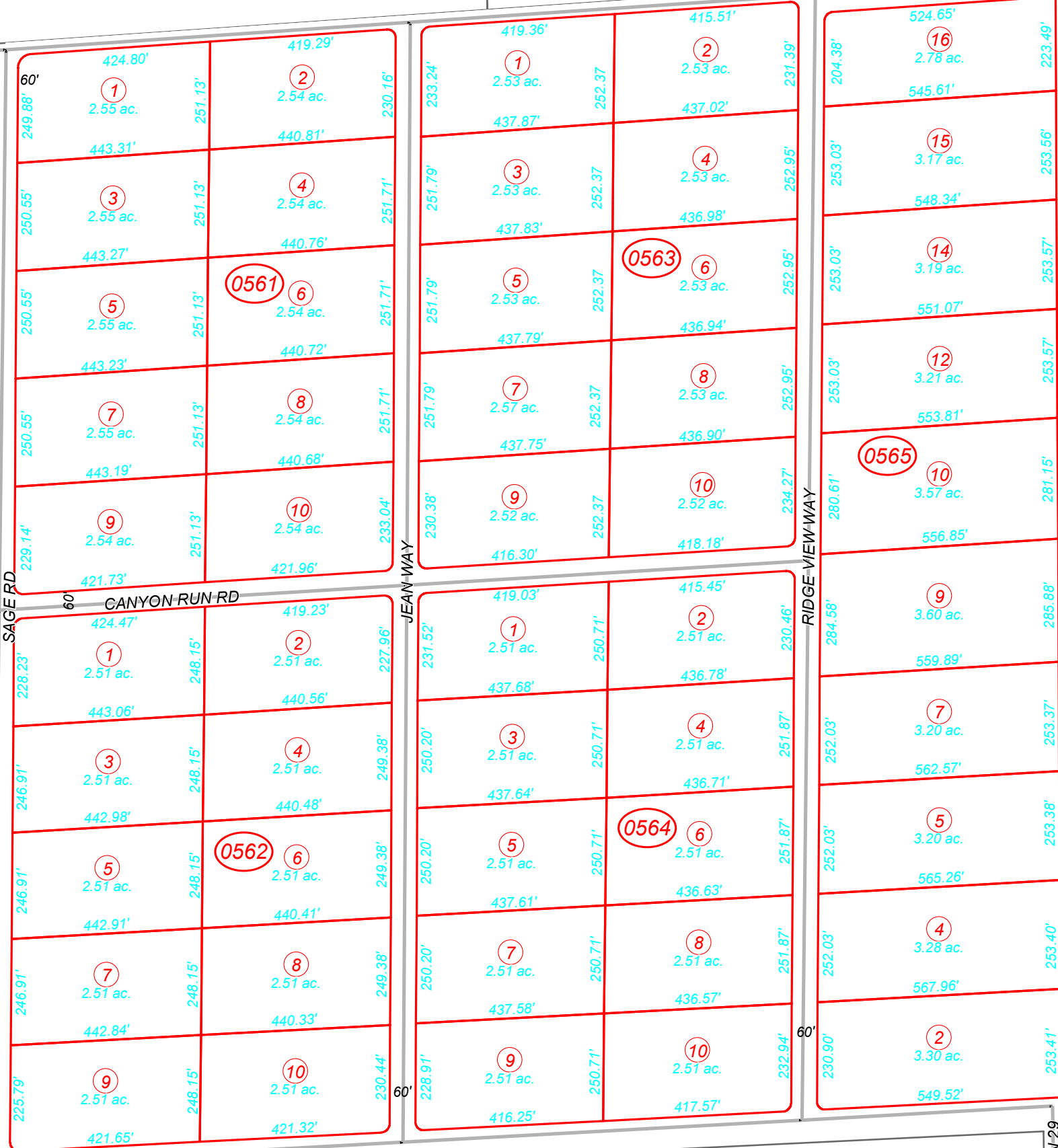
06	05	04	03	02	01
07	08	09	10	11	12
18	17	16	15	14	13
19	20	21	22	23	24
30	29	28	27	26	25
31	32	33	34	35	36



35N38E

50

LUPINE DR



55

45

58

UNKNOWN DR

COMMANDER DR