

06	05	04	03	02	01
07	08	09	10	11	12
18	17	16	15	14	13
19	20	21	22	23	24
30	29	28	27	26	25
31	32	33	34	35	36



HUMBOLDT COUNTY
PT. NW1/4 NW1/4 SEC. 16 T.35N. R.37E.

NOTE: This plat is for assessment purposes only
and does not represent a survey of the lands on this plat.



Map Prepared by:
HUMBOLDT COUNTY ASSESSOR'S OFFICE
WINNEMUCCA, NEVADA 89445

13-25

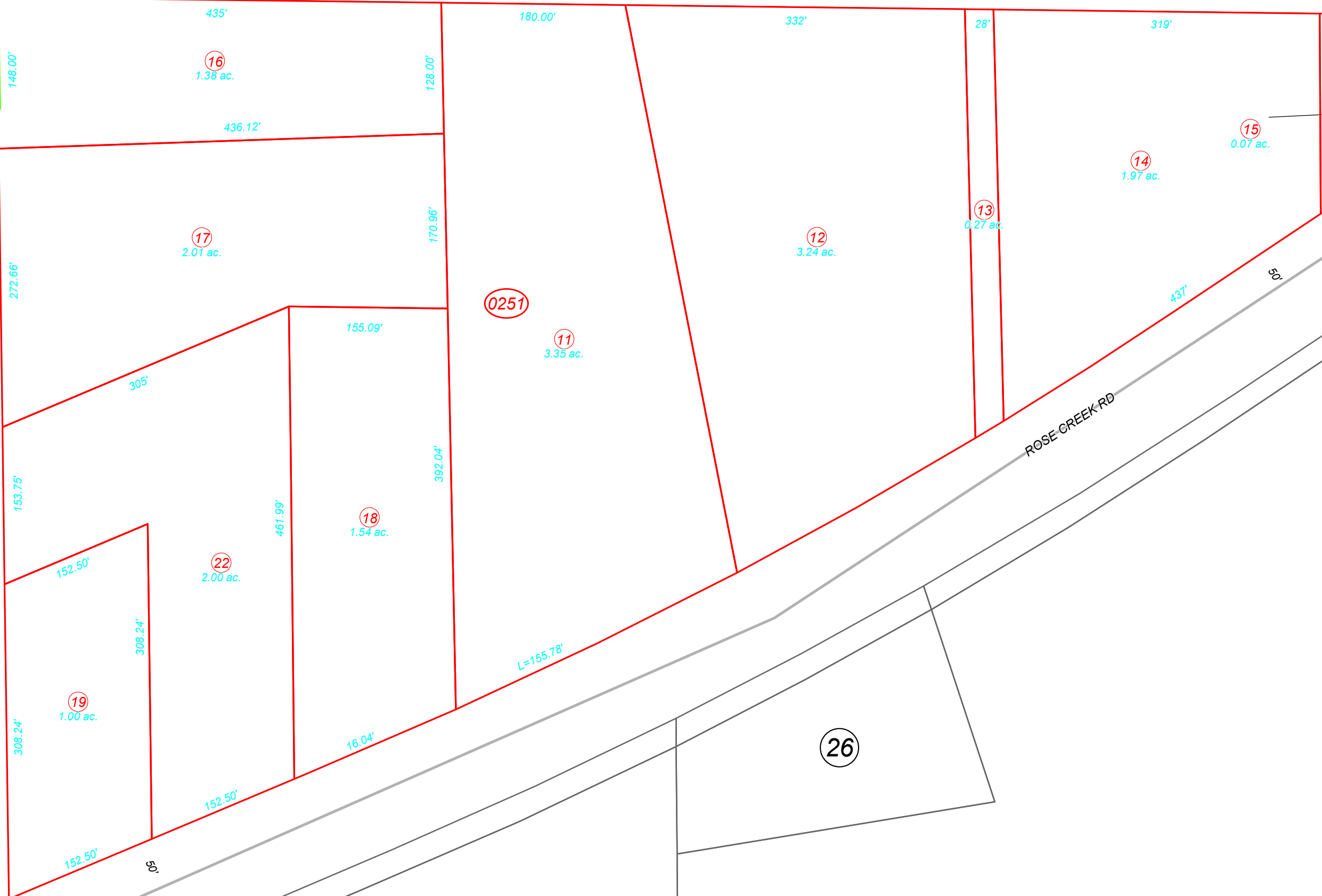
1"=100'
M.D.B. & M.

35N37E

15

11

RIVER RD



24

23
Page 1

26