

HUMBOLDT COUNTY

S1/2 SE1/4 SEC. 20 T.36N. R.38E.

Winnemucca

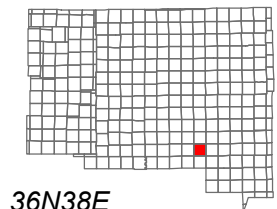
NOTE: This plat is for assessment purposes only and does not represent a survey of the lands on this plat.



Map Prepared by:
HUMBOLDT COUNTY ASSESSOR'S OFFICE
WINNEMUCCA, NEVADA 89445

16-27

1"=200'
M.D.B. & M.

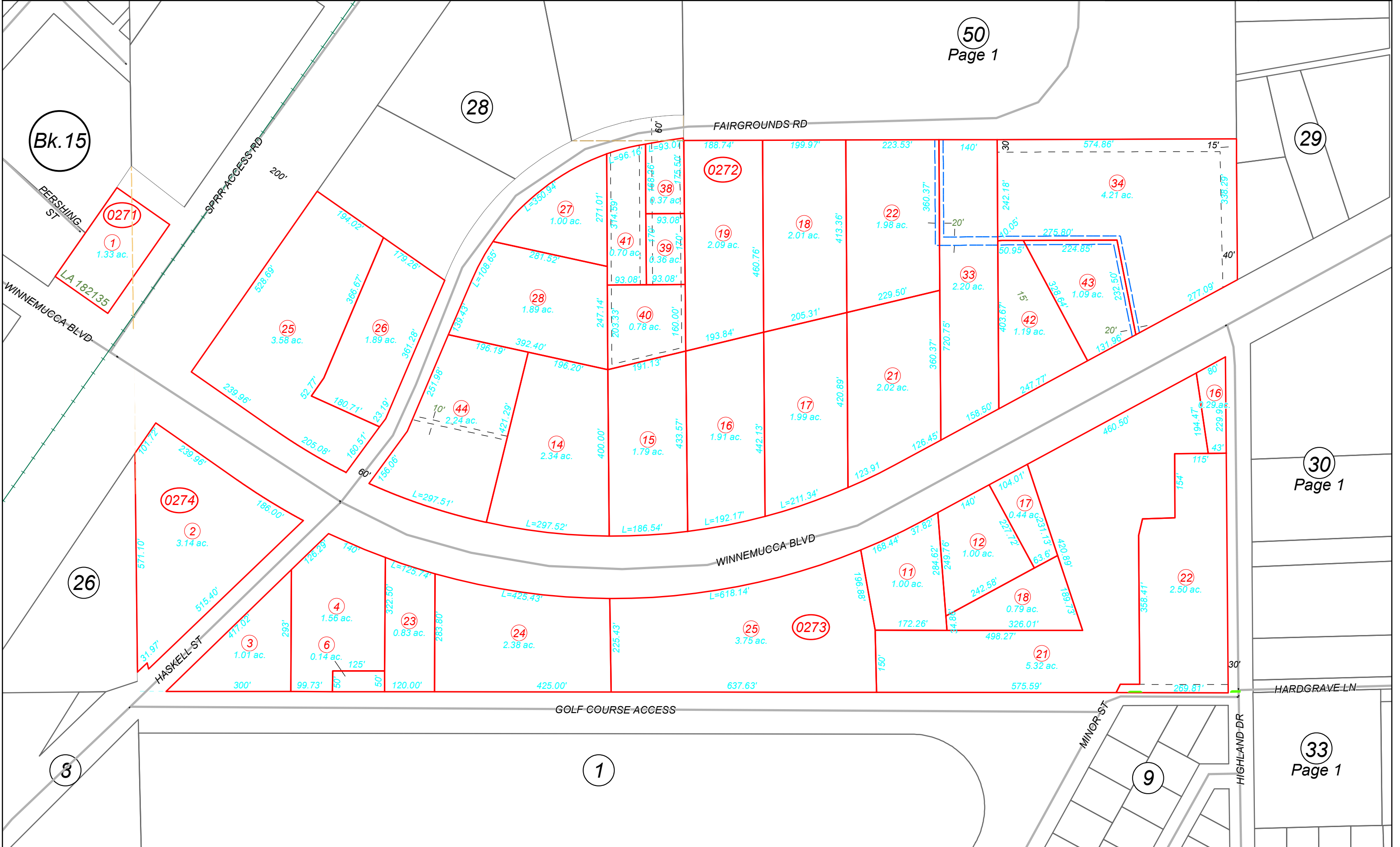


06	05	04	03	02	01
07	08	09	10	11	12
18	17	16	15	14	13
19	20	21	22	23	24
30	29	28	27	26	25
31	32	33	34	35	36



36N38E

50
Page 1



29

30
Page 1

33
Page 1

Bk. 15

1

9

26

3

28

0274

0273

0272

0271

1
1.33 ac.

LA 182135

25
3.58 ac.

26
1.89 ac.

28
1.89 ac.

40
0.78 ac.

19
2.09 ac.

18
2.01 ac.

22
1.98 ac.

33
2.20 ac.

42
1.19 ac.

43
1.09 ac.

34
4.21 ac.

2
3.14 ac.

4
1.56 ac.

23
0.83 ac.

24
2.38 ac.

15
1.79 ac.

16
1.91 ac.

17
1.99 ac.

21
2.02 ac.

11
1.00 ac.

12
1.00 ac.

17
0.44 ac.

18
0.79 ac.

21
5.32 ac.

22
2.50 ac.

3
1.01 ac.

6
0.14 ac.

44
2.24 ac.

14
2.34 ac.

15
1.79 ac.

16
1.91 ac.

17
1.99 ac.

21
2.02 ac.

25
3.75 ac.

11
1.00 ac.

12
1.00 ac.

17
0.44 ac.

18
0.79 ac.

21
5.32 ac.

22
2.50 ac.

31.97'

571.10'

239.96'

101.12'

239.96'

186.00'

515.40'

417.02'

293'

125.29'

140'

322.50'

L=125.74'

283.80'

L=425.43'

225.43'

L=618.14'

168.44'

37.82'

284.62'

249.76'

140'

242.58'

498.27'

172.26'

575.59'

326.01'

420.89'

150'

188.96'

166.44'

37.82'

284.62'

249.76'

140'

242.58'

498.27'

172.26'

575.59'

326.01'

420.89'

150'

188.96'

166.44'

37.82'

284.62'

249.76'

140'

242.58'

498.27'

172.26'

575.59'

326.01'

420.89'

150'

188.96'

166.44'

37.82'

284.62'

249.76'

140'

242.58'

498.27'

172.26'

575.59'

326.01'

420.89'

150'

188.96'

166.44'

37.82'

284.62'

249.76'

140'

242.58'

498.27'

172.26'

575.59'

326.01'

420.89'

150'

188.96'

166.44'

37.82'

284.62'

249.76'

140'

242.58'

498.27'

172.26'

575.59'

326.01'

420.89'

150'

188.96'

166.44'

37.82'

284.62'

249.76'

140'

242.58'

498.27'

172.26'

575.59'

326.01'

420.89'

150'

188.96'

166.44'

37.82'

284.62'

249.76'

140'

242.58'

498.27'

172.26'

575.59'

326.01'

420.89'

150'

188.96'

166.44'

37.82'

284.62'

249.76'

140'

242.58'

498.27'

172.26'

575.59'

326.01'

420.89'

150'

188.96'

166.44'

37.82'

284.62'

249.76'

140'

242.58'

498.27'

172.26'

575.59'

326.01'

420.89'

150'

188.96'

166.44'

37.82'

284.62'

249.76'

140'

242.58'

498.27'

172.26'

575.59'

326.01'

420.89'

150'

188.96'

166.44'

37.82'

284.62'

249.76'

140'

242.58'

498.27'

172.26'

575.59'

326.01'

420.89'

150'

188.96'

166.44'

37.82'

284.62'

249.76'

140'

242.58'

498.27'

172.26'

575.59'

326.01'

420.89'

150'

188.96'

166.44'

37.82'

284.62'

249.76'

140'

242.58'

498.27'

172.26'

575.59'

326.01'

420.89'

150'

188.96'

166.44'

37.82'

284.62'

249.76'

140'

242.58'

498.27'

172.26'

575.59'

326.01'

420.89'

150'

188.96'

166.44'

37.82'

284.62'

249.76'

140'

242.58'

498.27'

172.26'

575.59'

326.01'

420.89'

150'

188.96'

166.44'

37.82'

284.62'

249.76'