

06	05	04	03	02	01
07	08	09	10	11	12
18	17	16	15	14	13
19	20	21	22	23	24
30	29	28	27	26	25
31	32	33	34	35	36



HUMBOLDT COUNTY

T.46N. R.25E.

NOTE: This plat is for assessment purposes only and does not represent a survey of the lands on this plat.



Map Prepared by:
HUMBOLDT COUNTY ASSESSOR'S OFFICE
WINNEMUCCA, NEVADA 89445

17-7

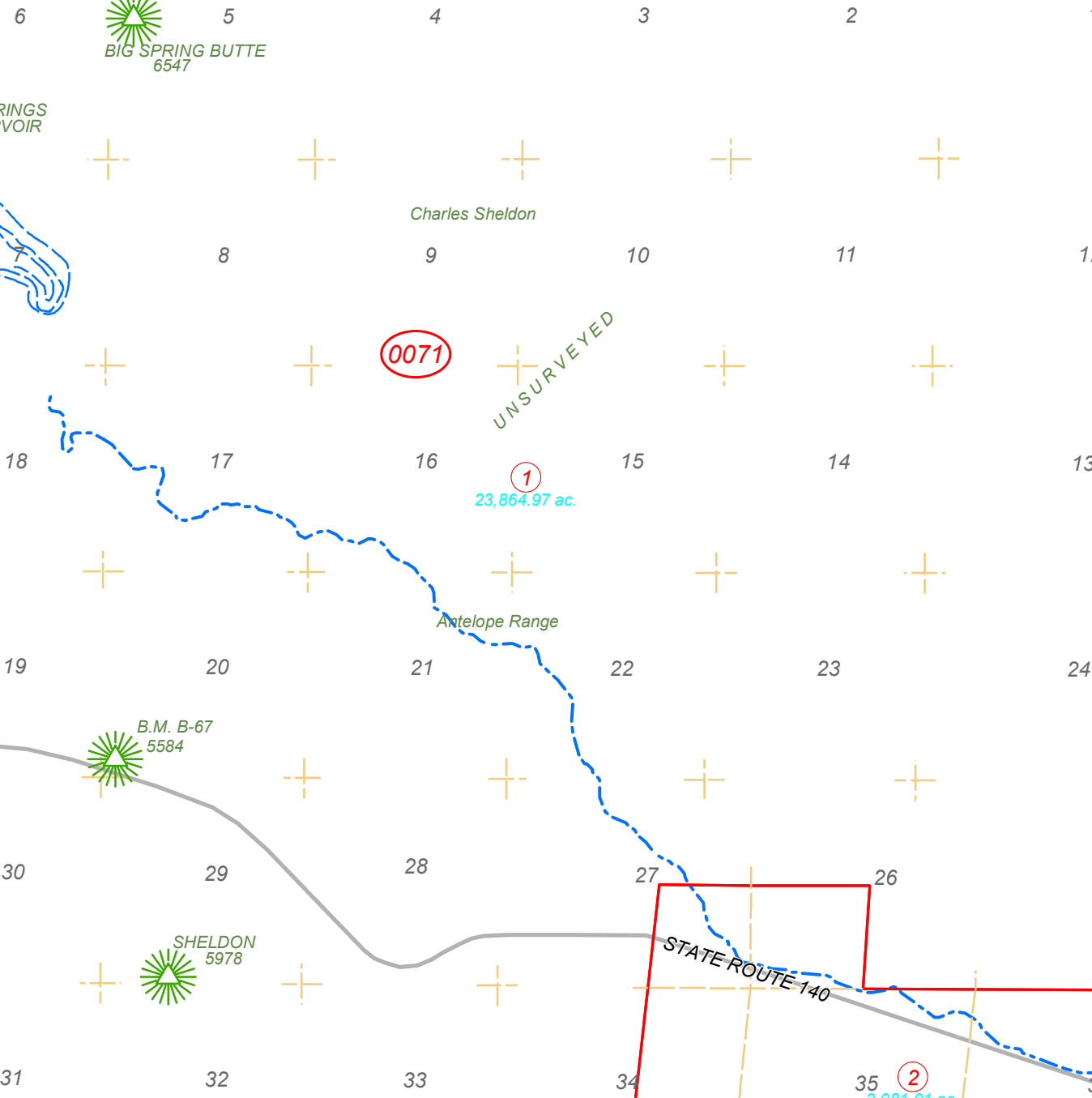
1"=4,000'
M.D.B. & M.

46N25E

2

3

4



6

8

CEDARVILLE RD

STATE ROUTE 140

VIRGIN VALLEY RD

9

71

12