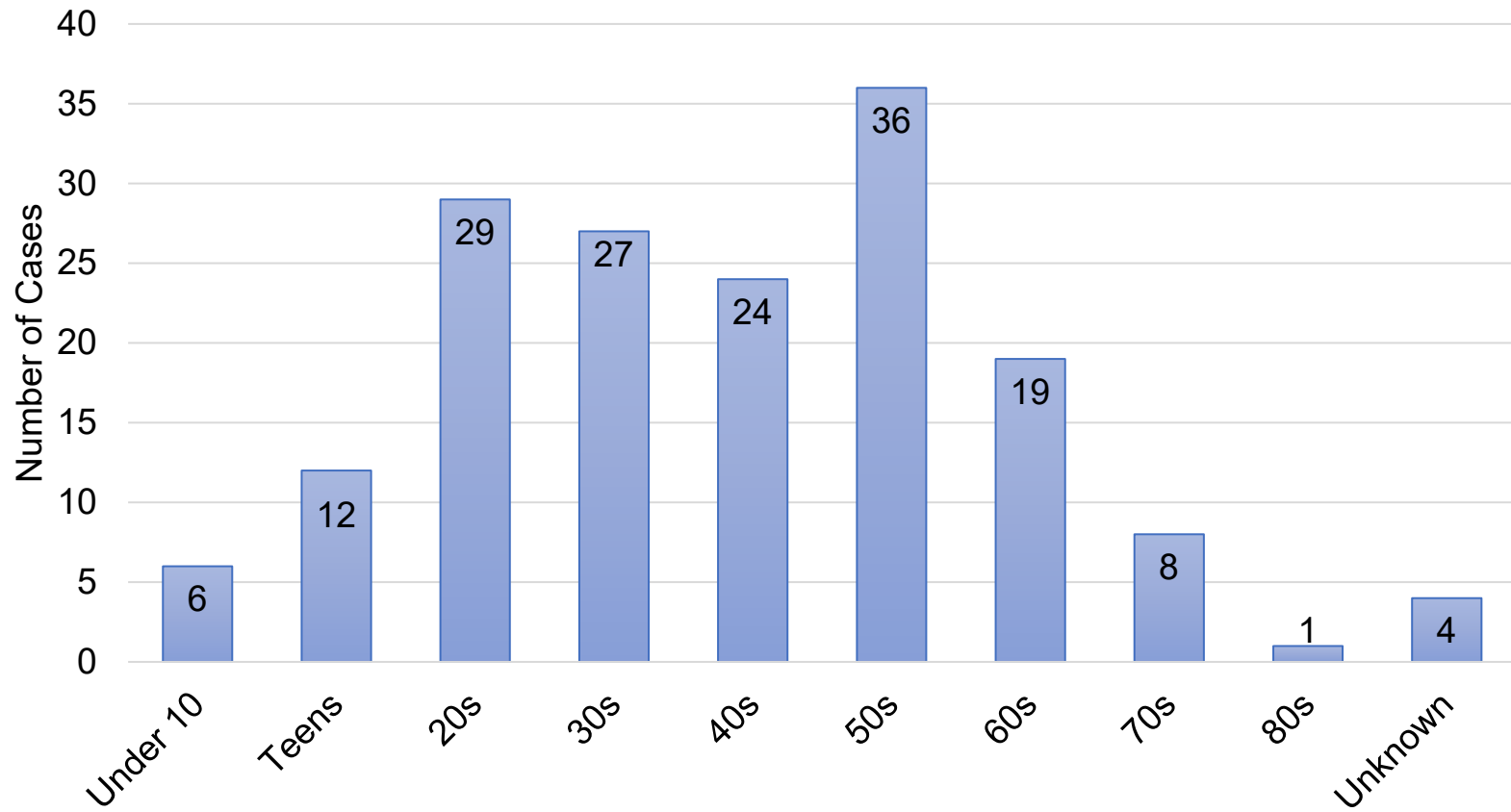
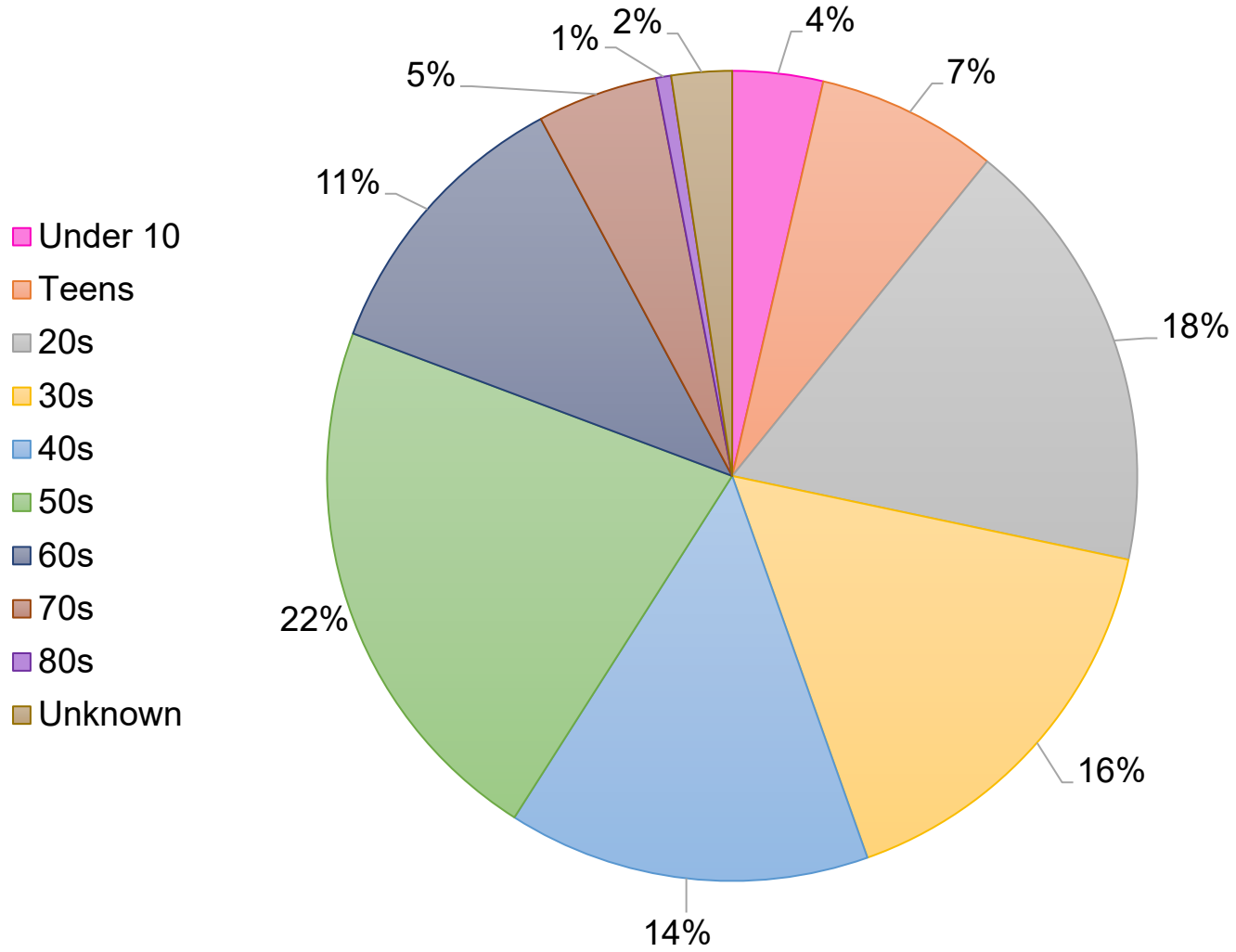


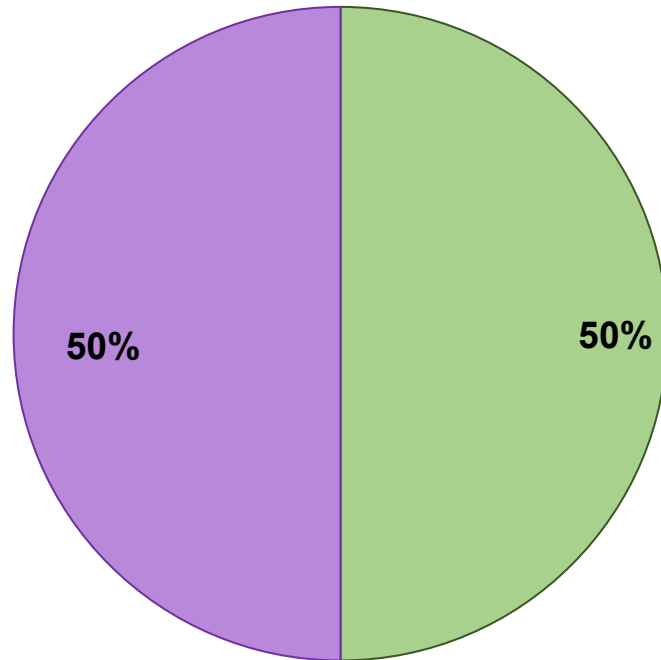
Confirmed Cases by Age



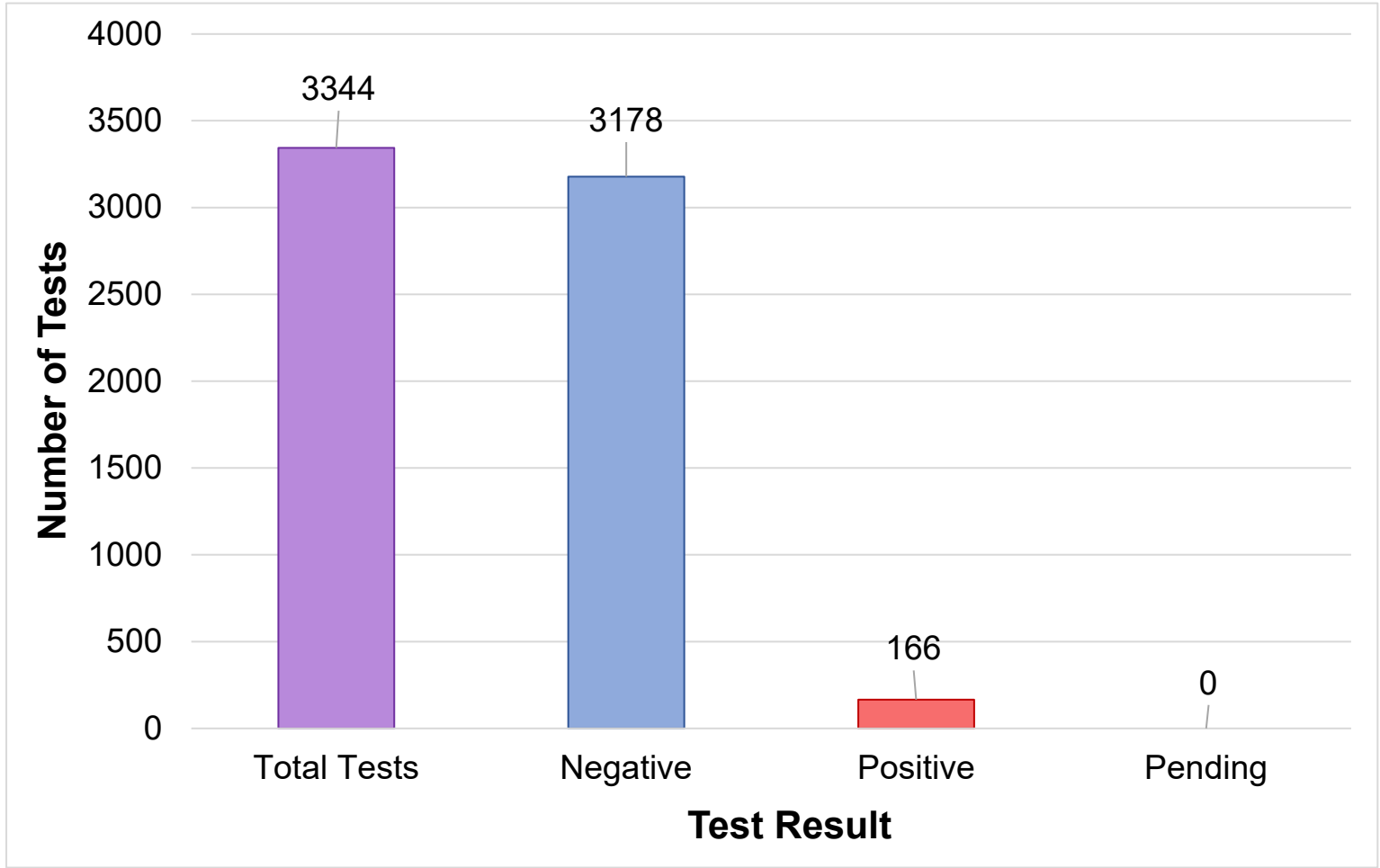
Confirmed Cases by Age

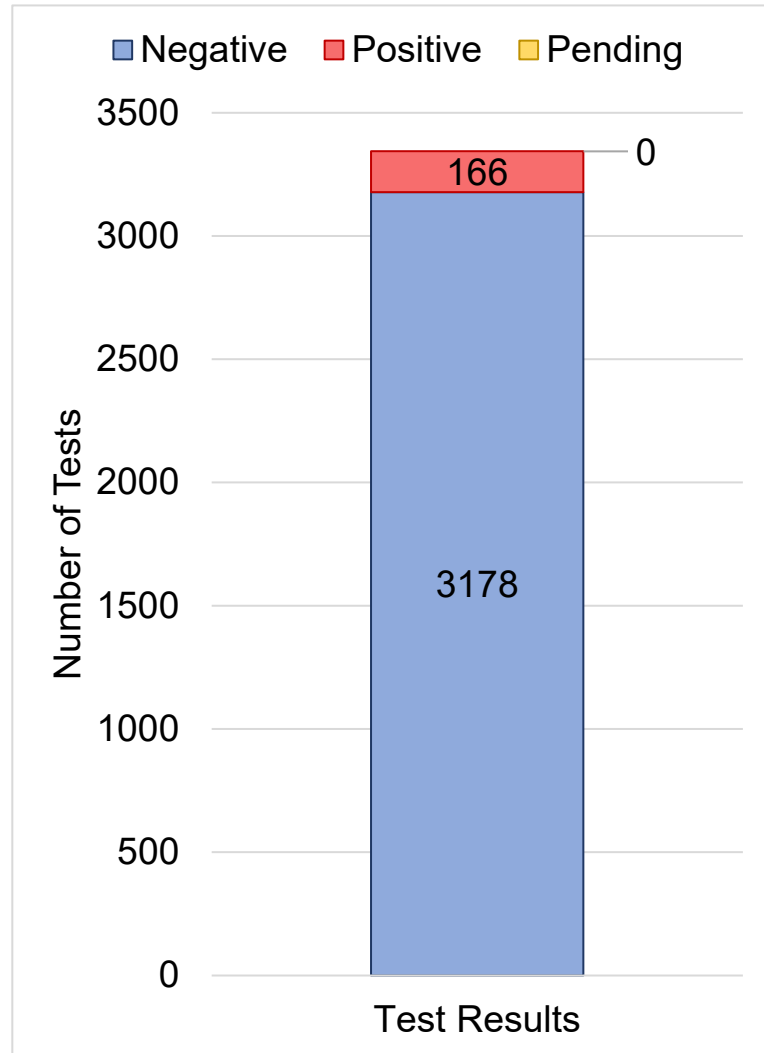
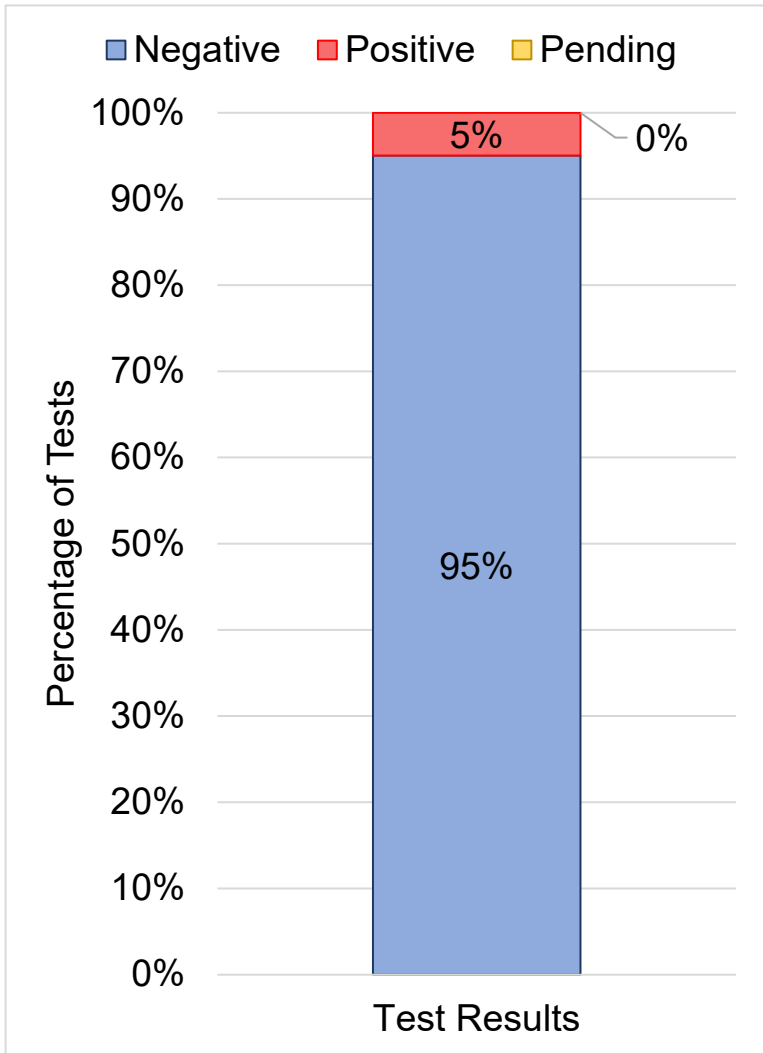


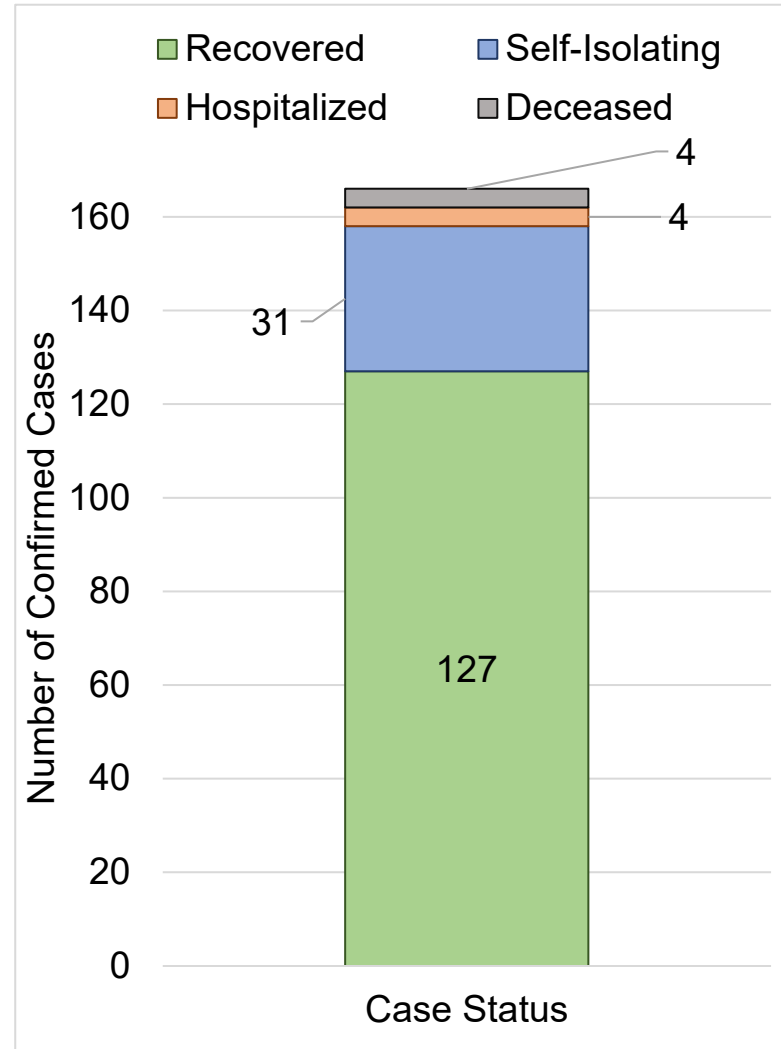
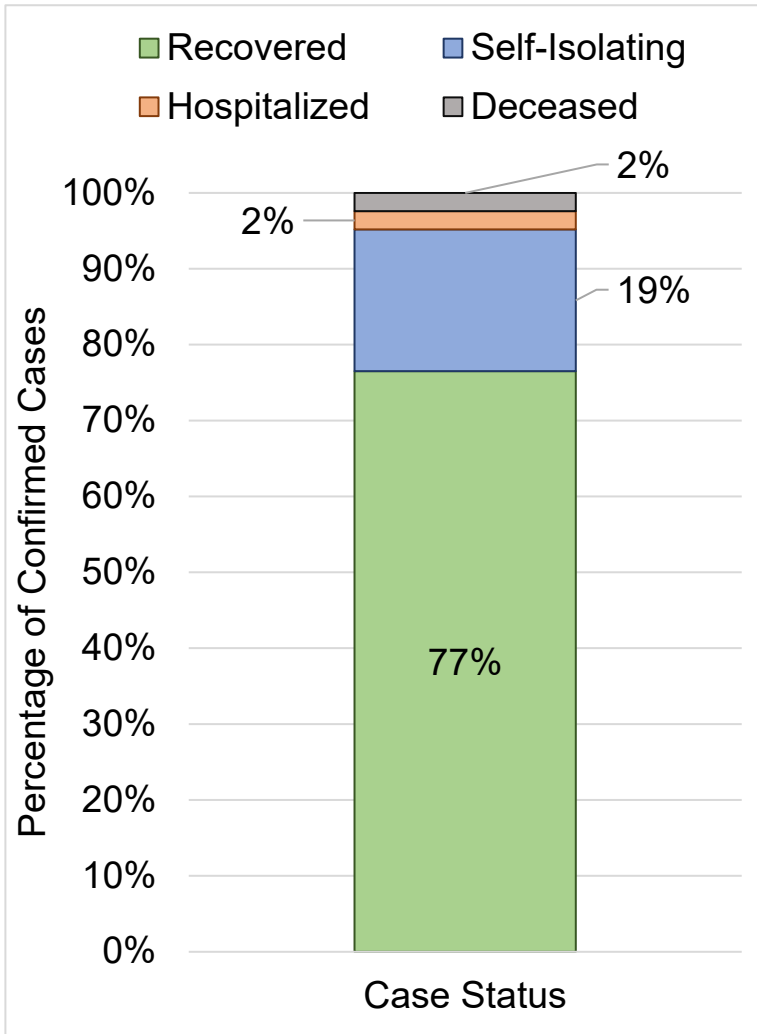
Confirmed Cases



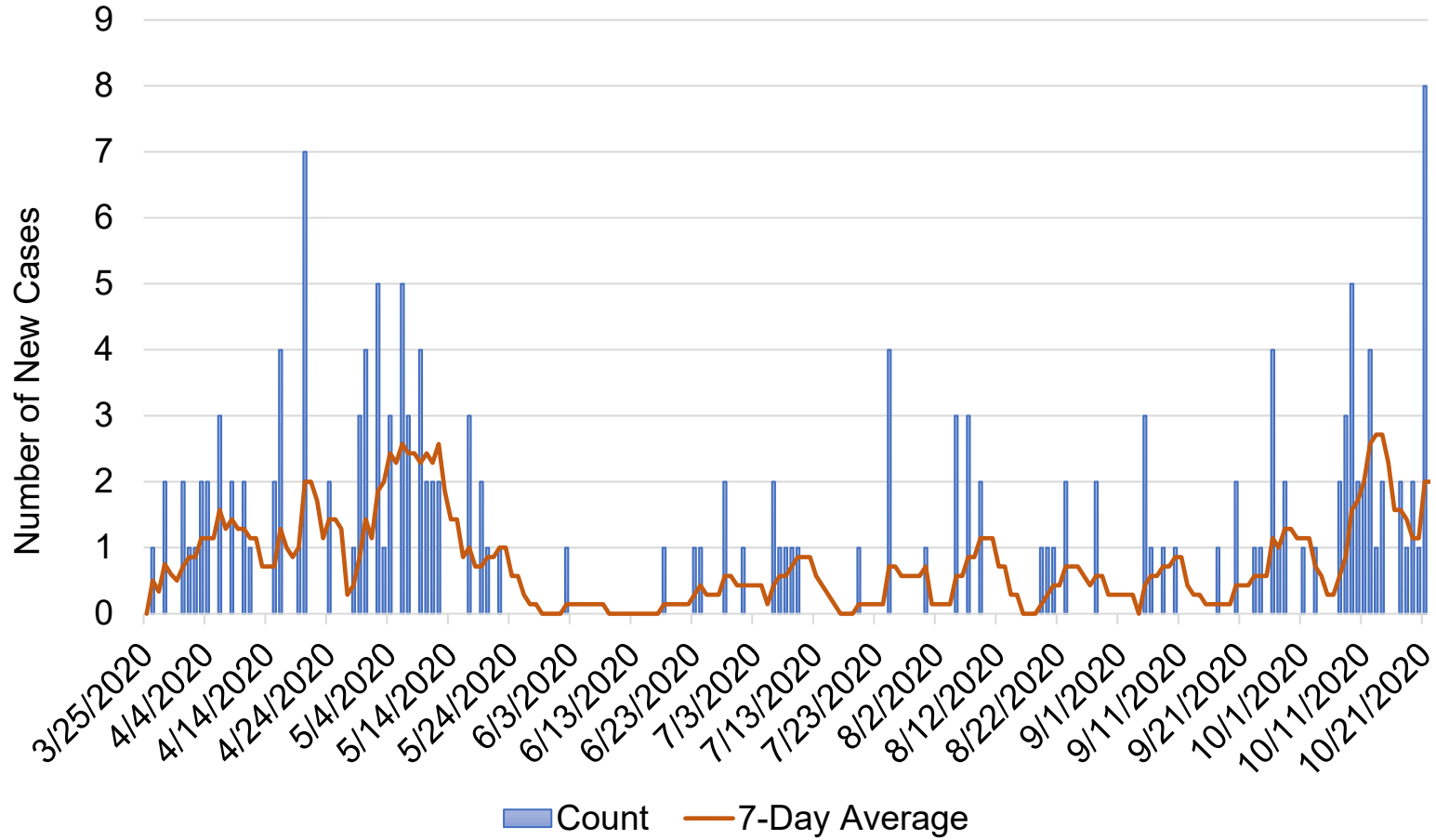
■ Male ■ Female



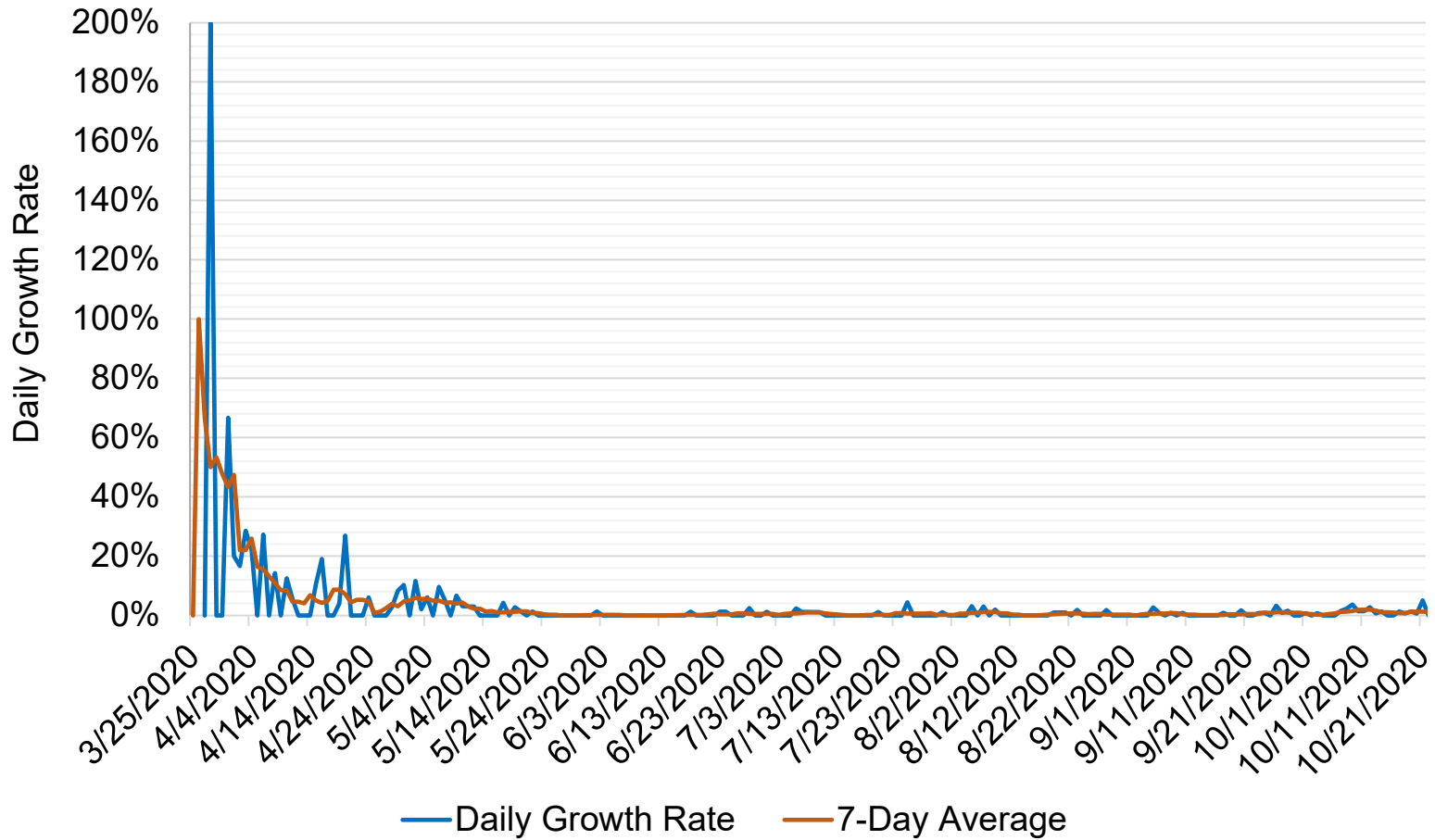




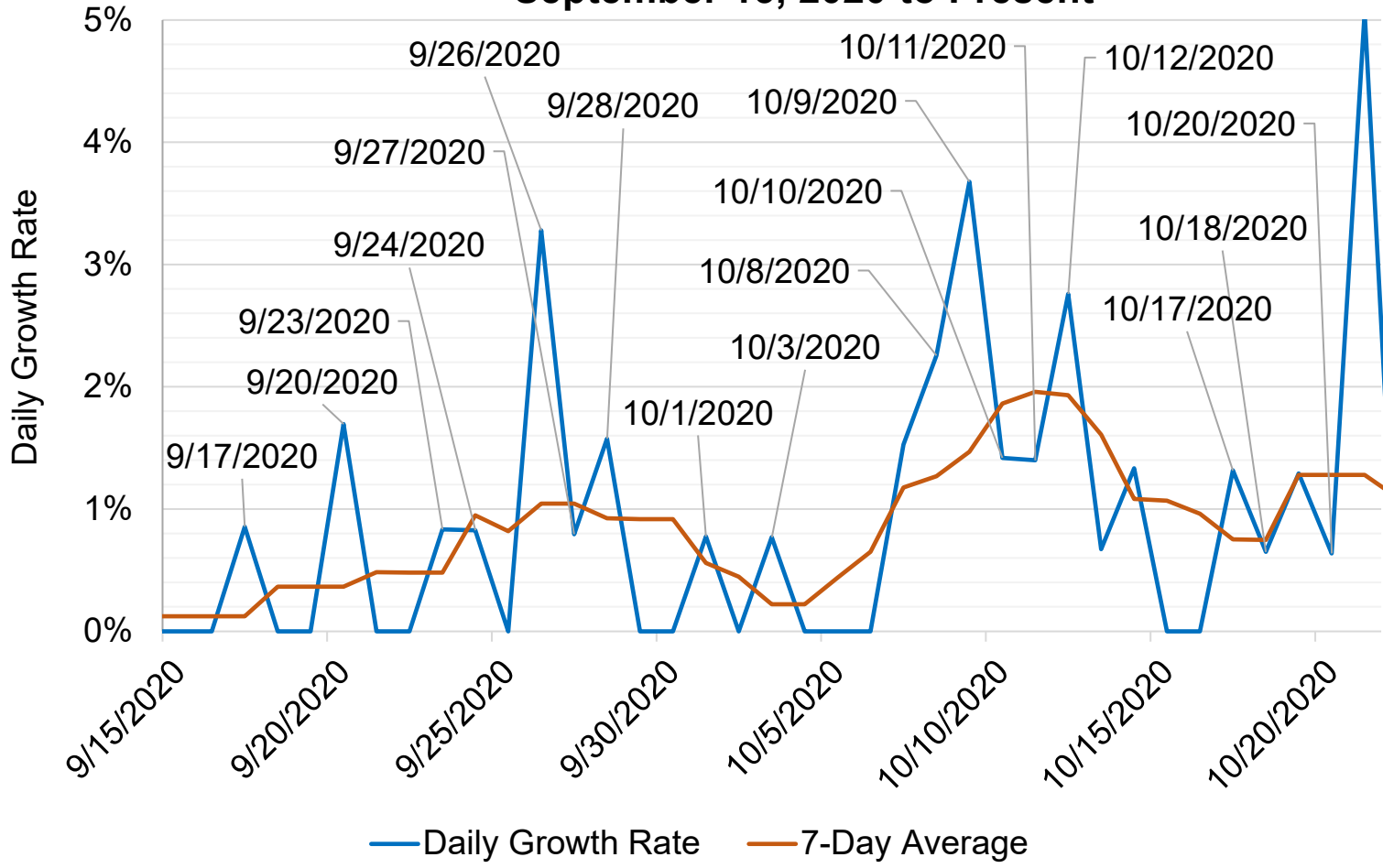
New Cases by Day and Seven-Day Average



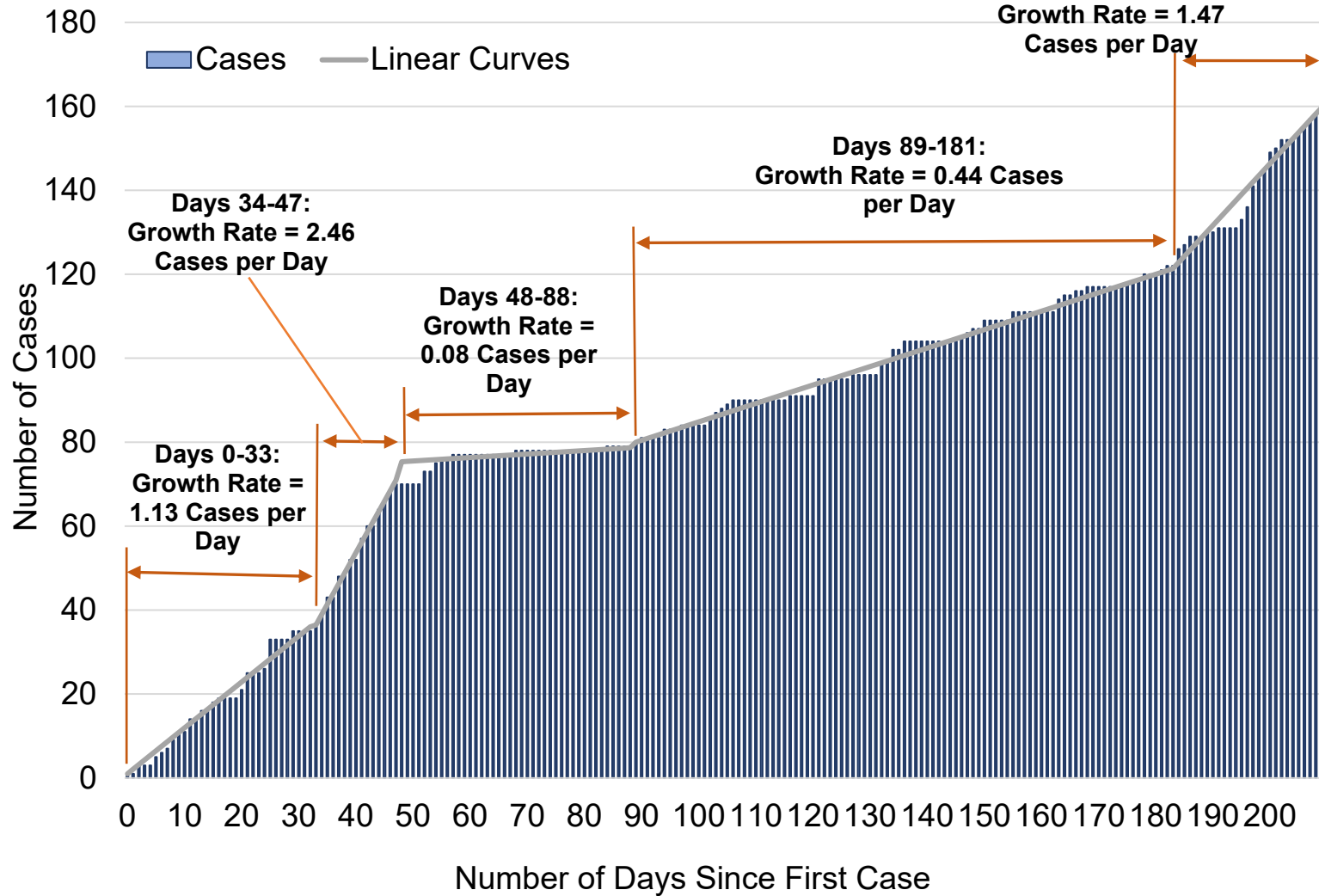
Daily Growth Rate and 7-Day Average Growth Rate



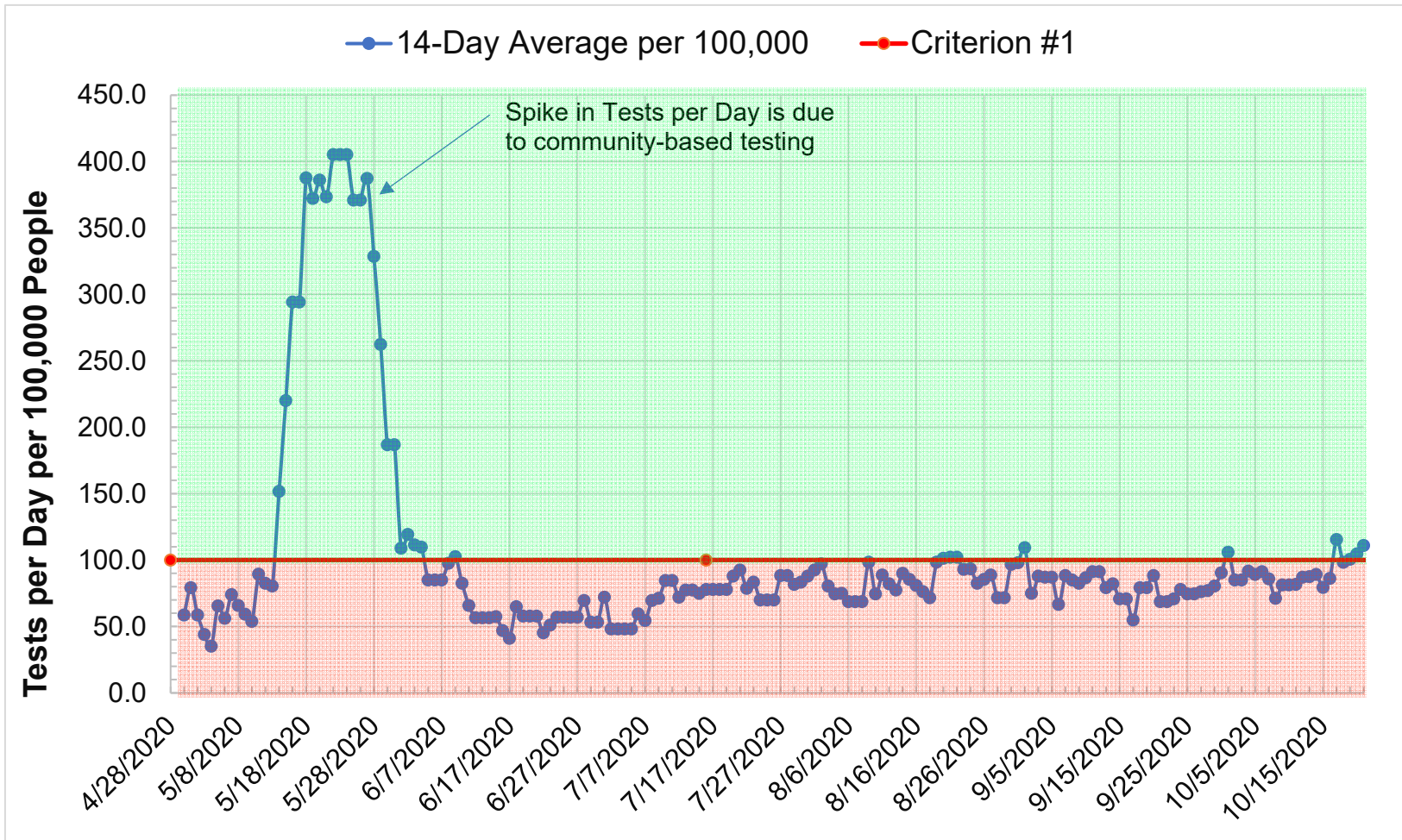
Daily Growth Rate and 7-Day Average Growth Rate September 15, 2020 to Present



Cumulative Cases by Day

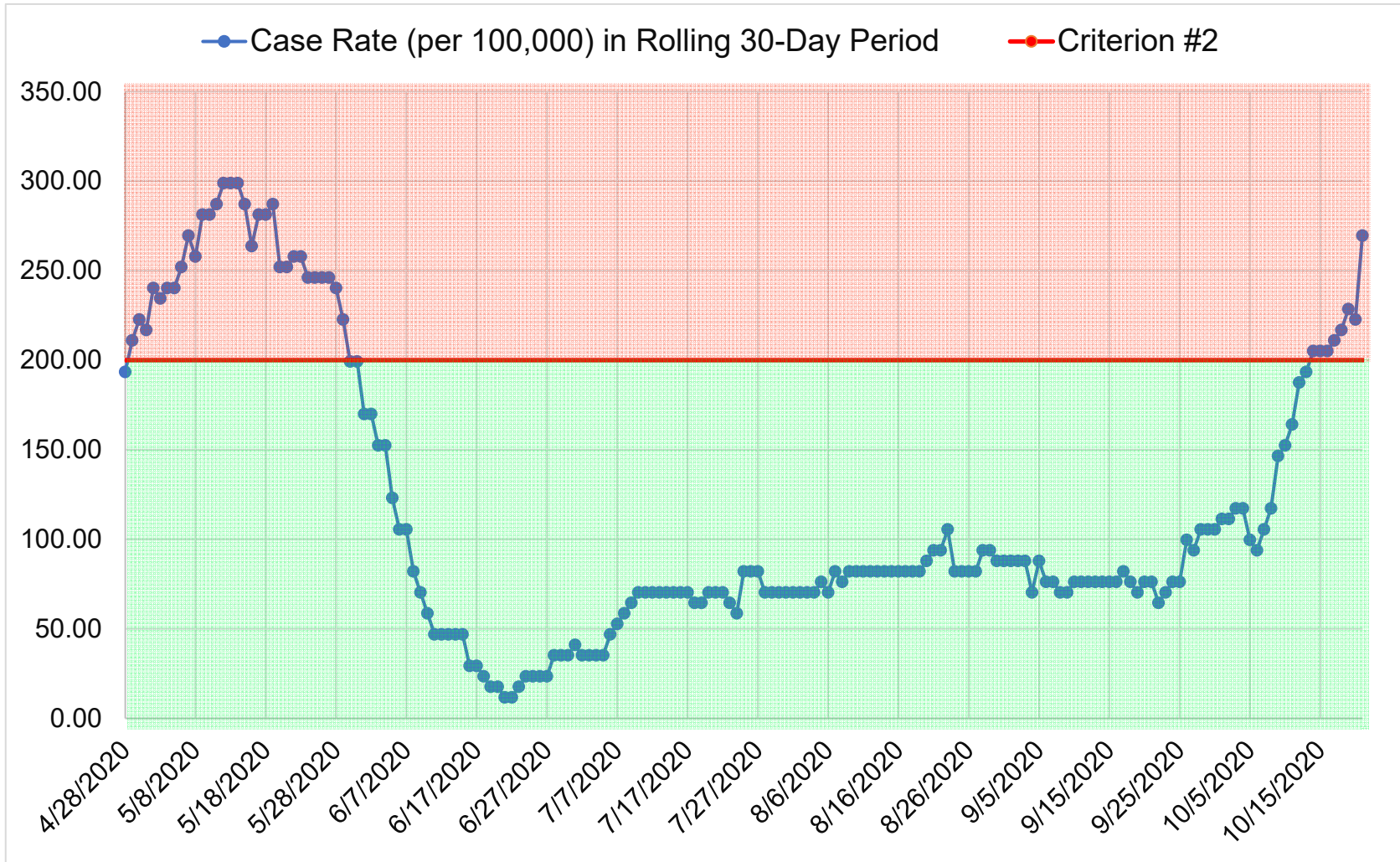


Fail If: Average number of tests per day per 100,000 people (14-Day Average with 7-Day Lag) < 100



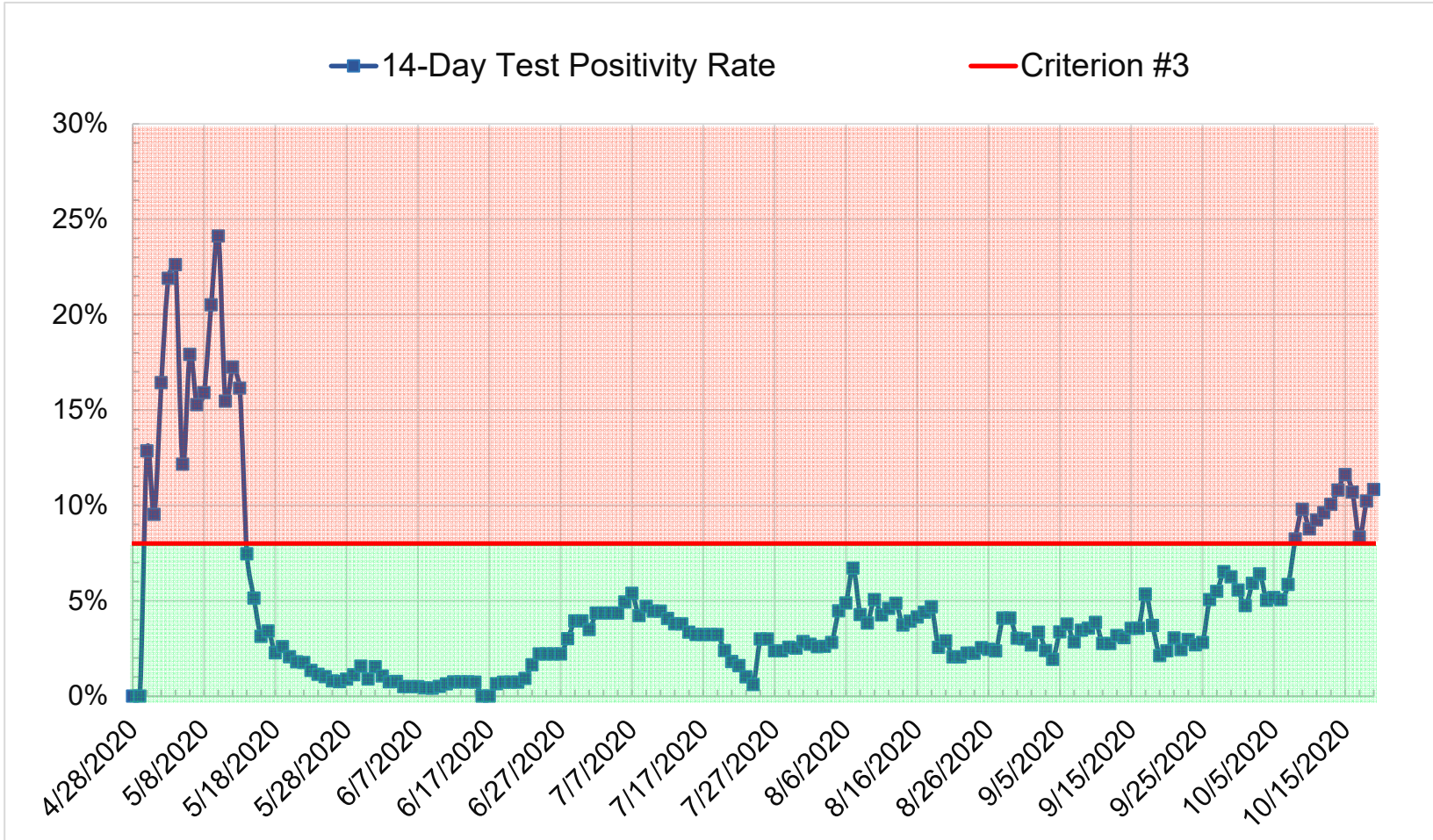
PASS

Fail If: Case Rate per 100,000 (Total in 30-day period) > 200



FAIL

Fail If: Case Rate per 100,000 (Criterion #2) > 50 AND Testing Positivity > 8.0%



FAIL

Wastewater Testing

