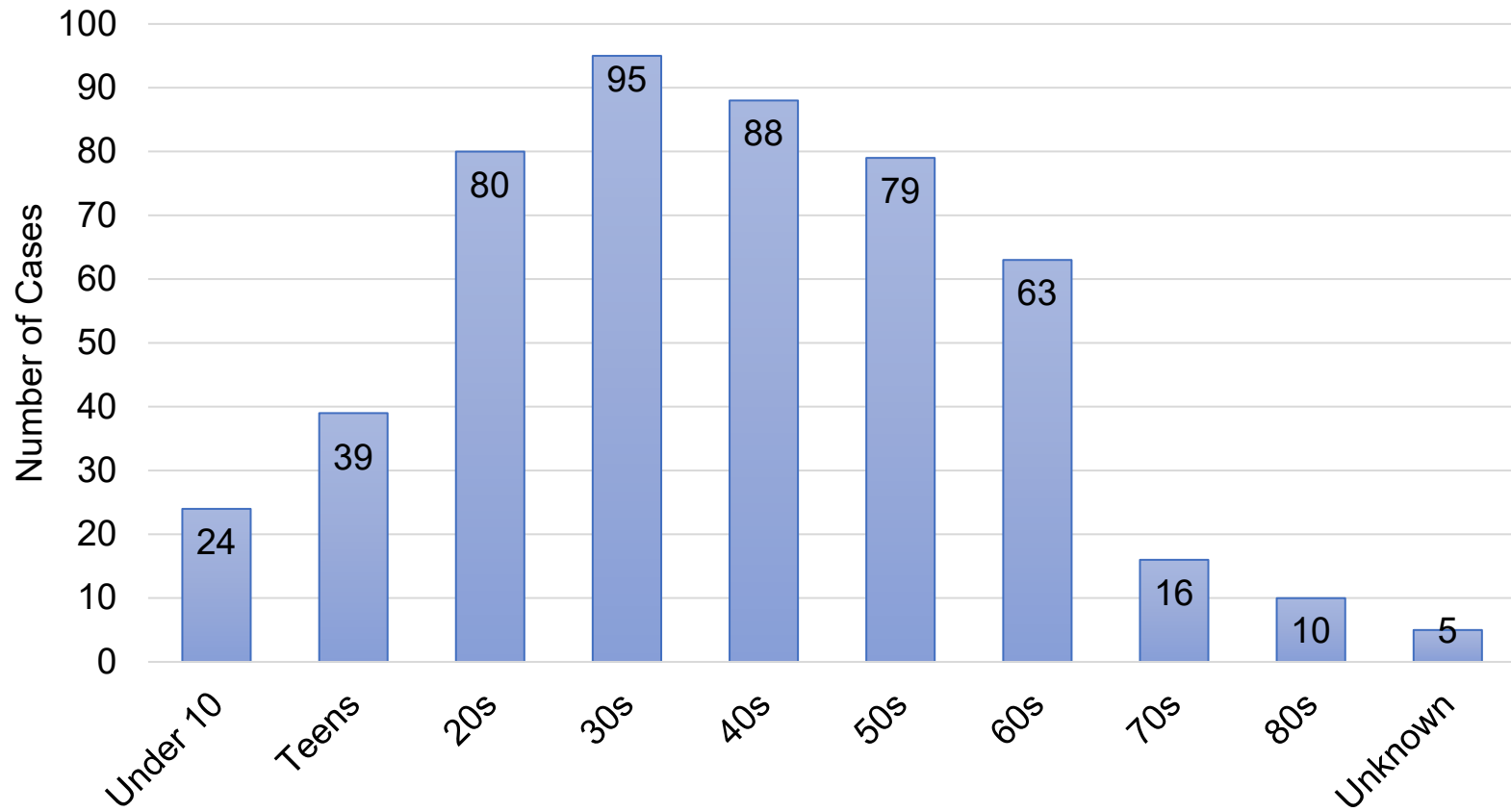
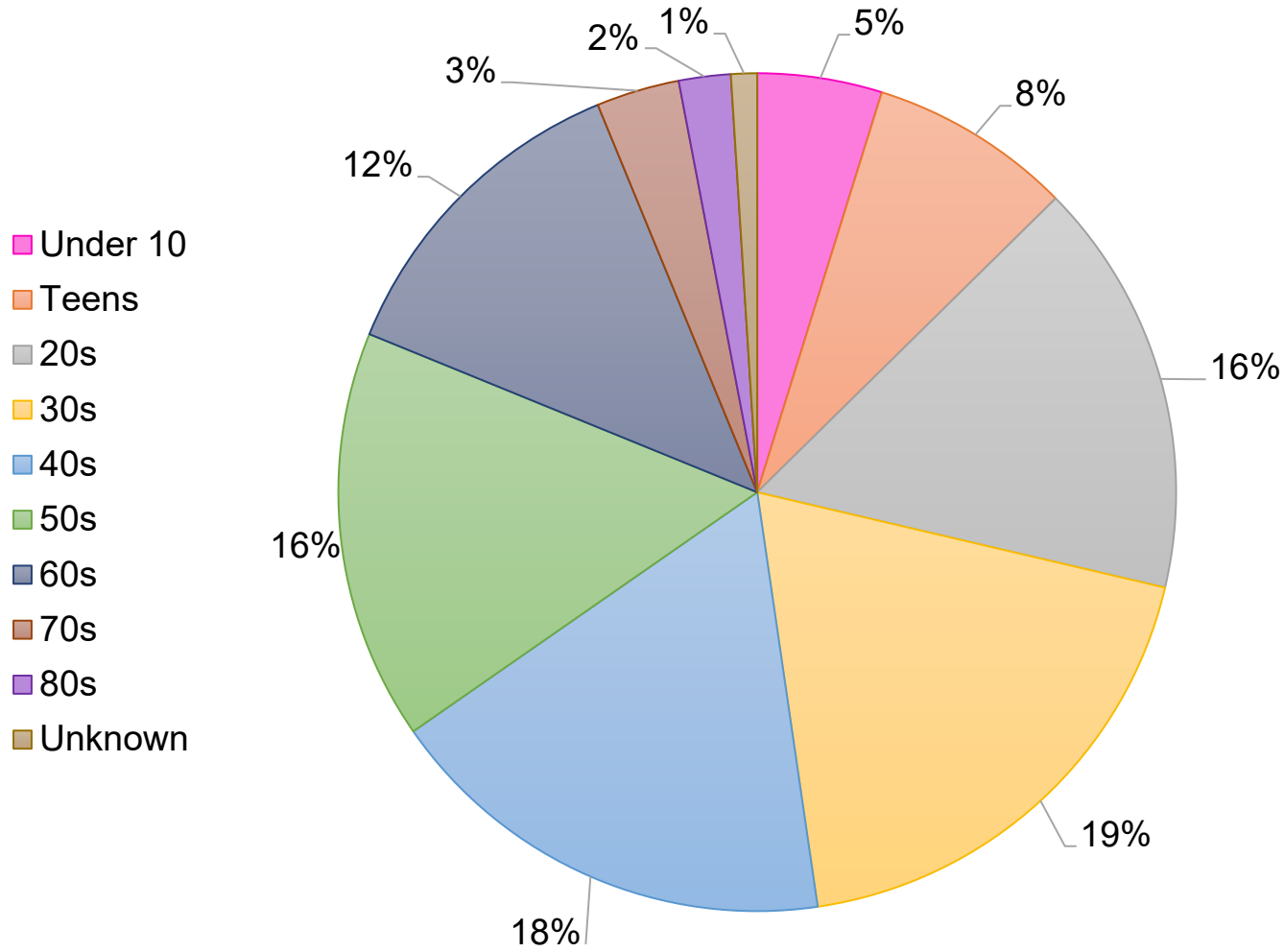


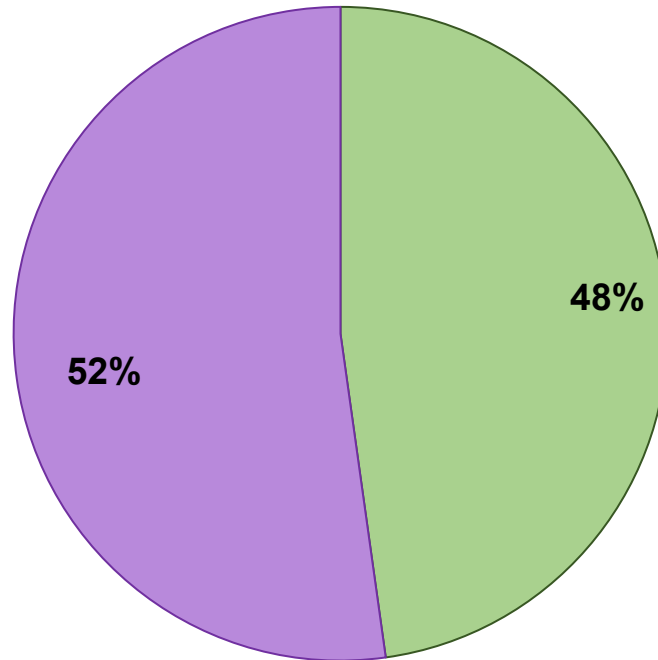
Confirmed Cases by Age



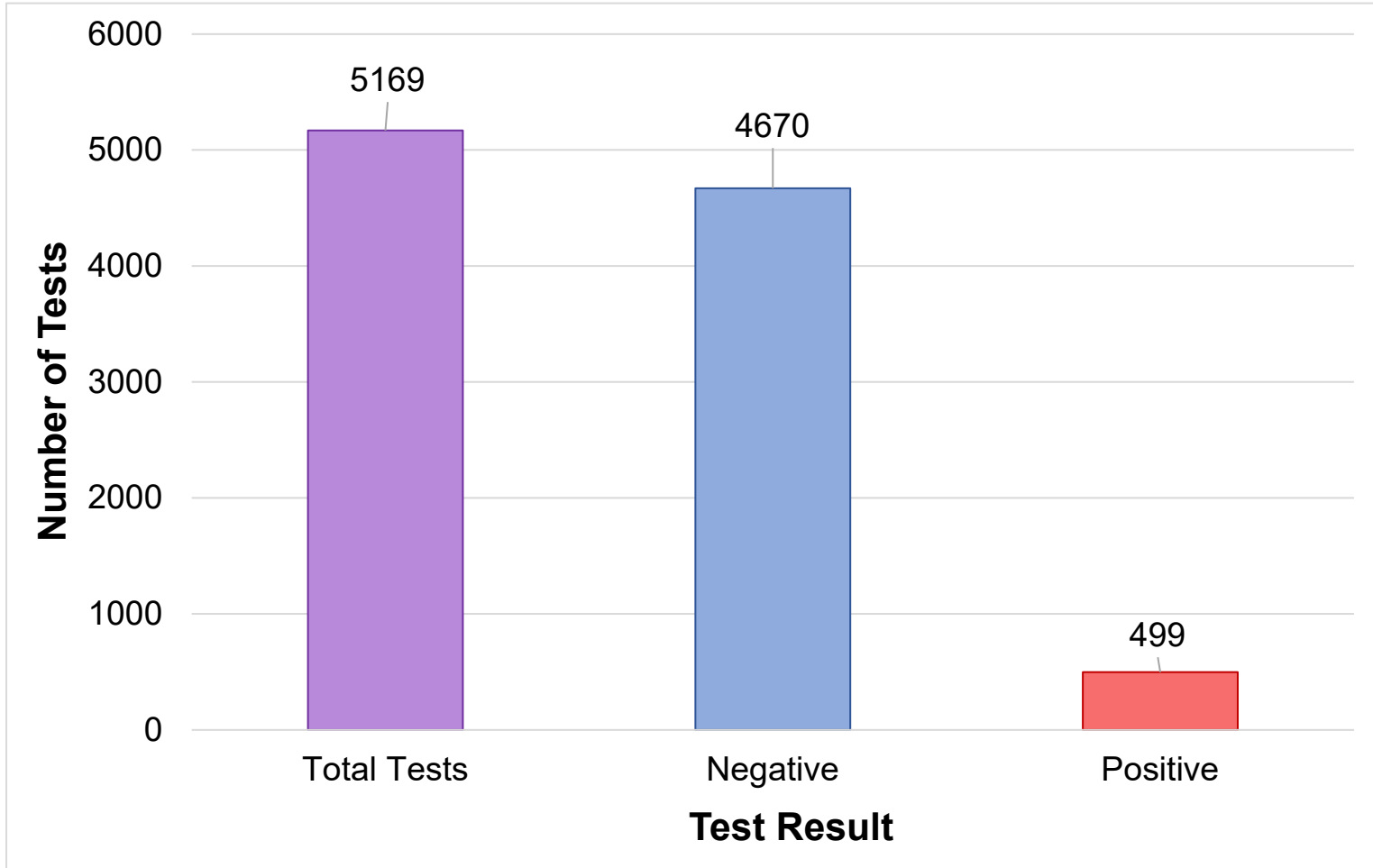
Confirmed Cases by Age

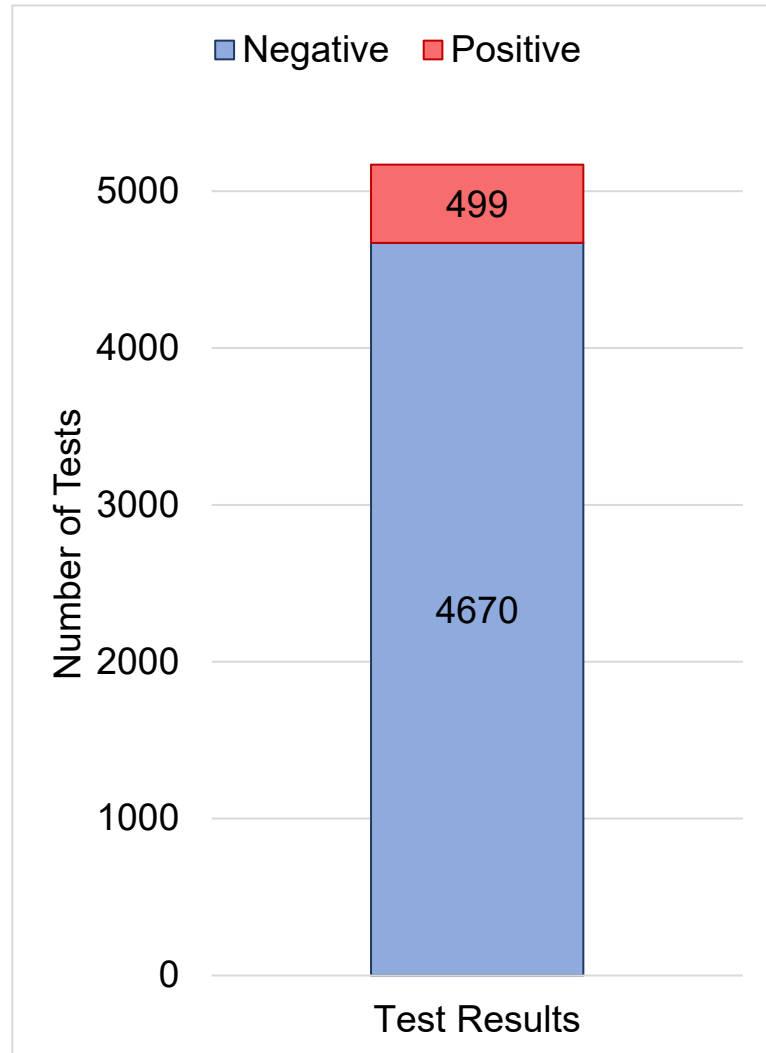
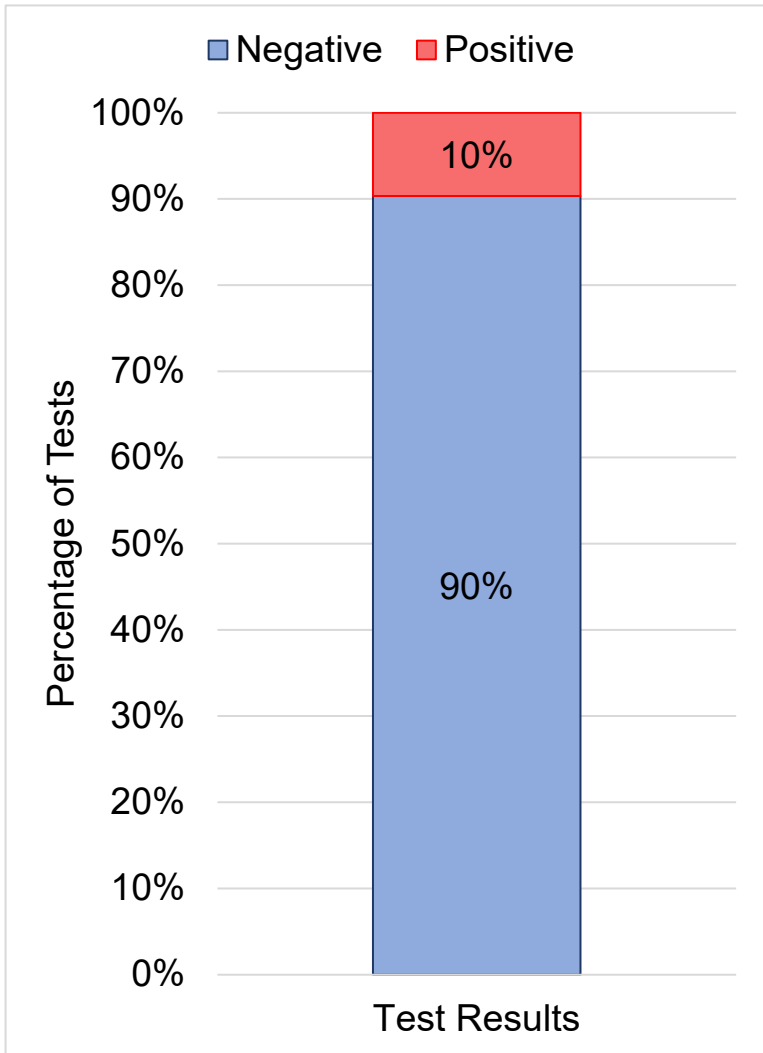


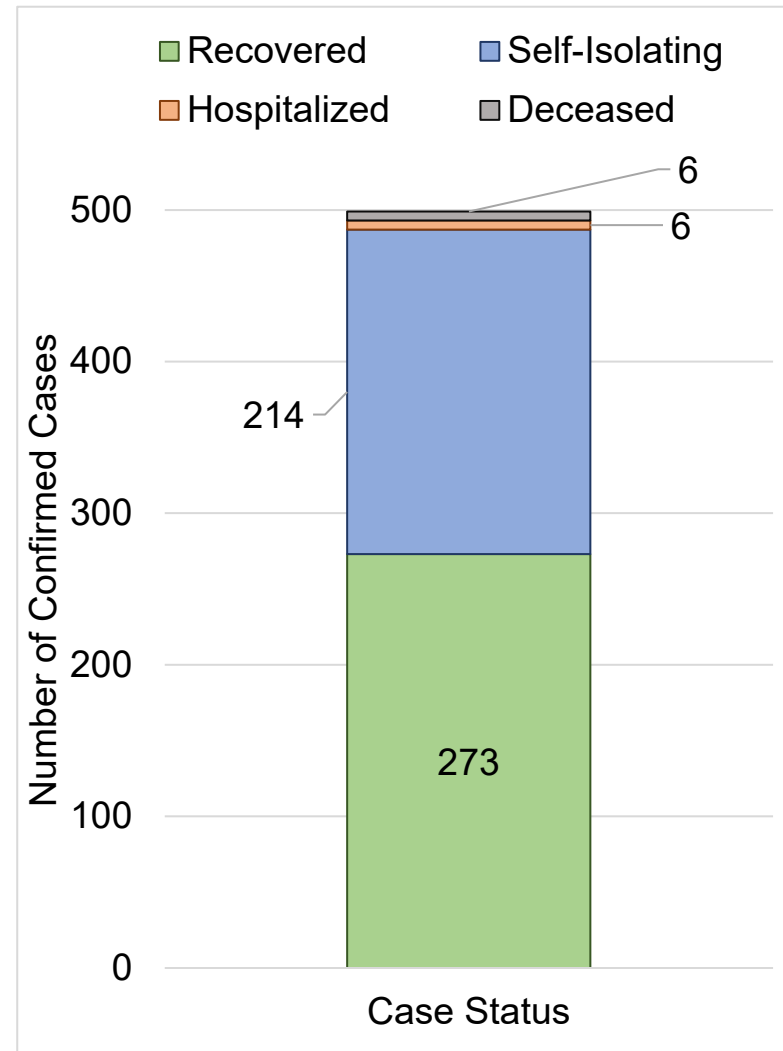
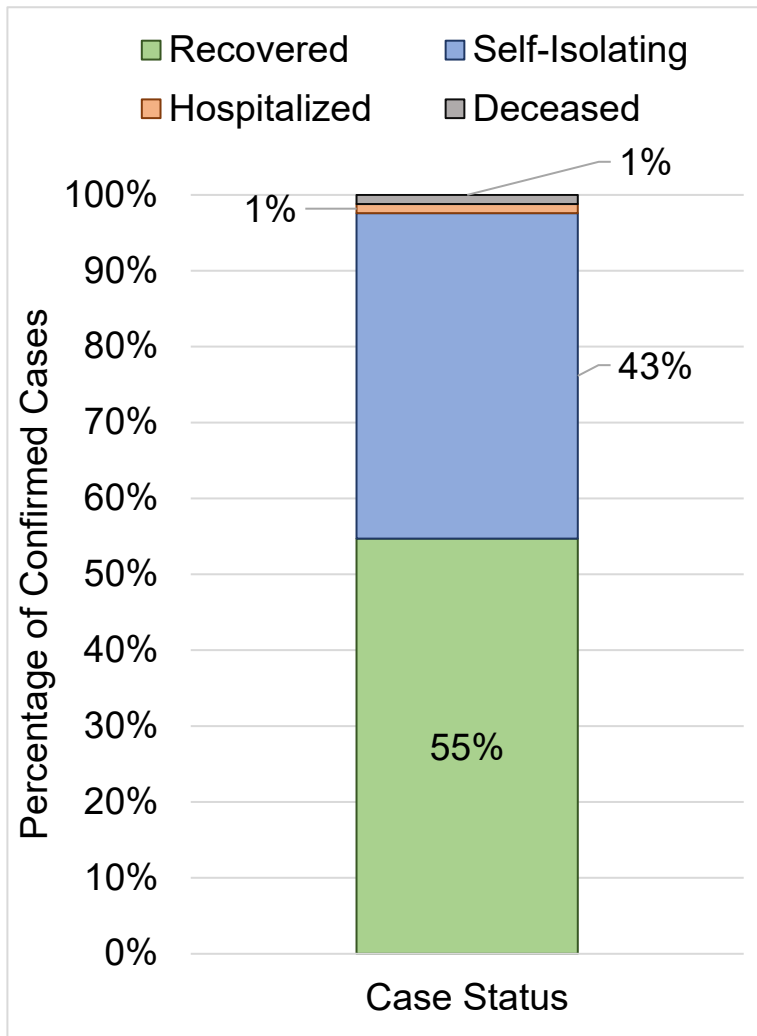
Confirmed Cases



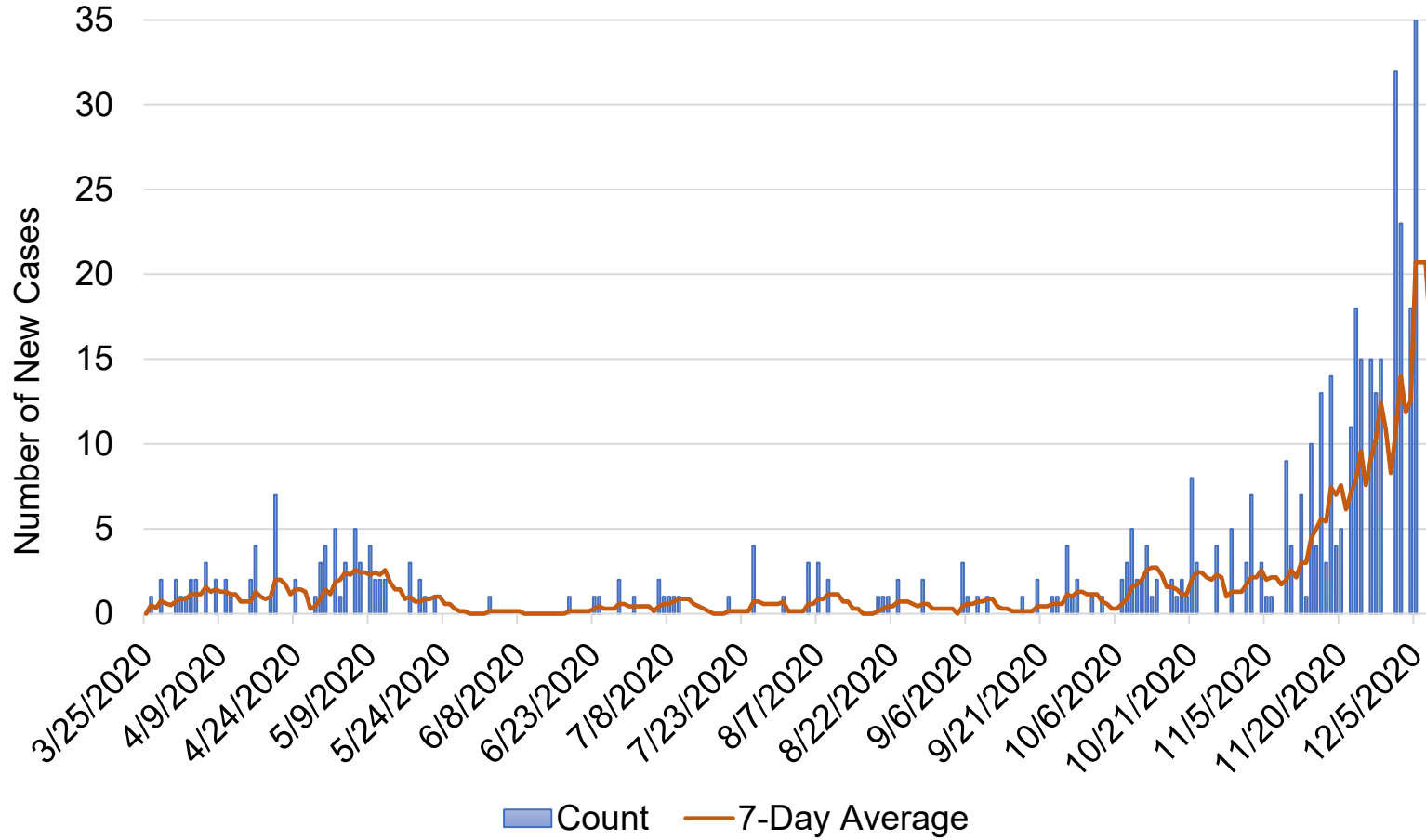
■ Male ■ Female



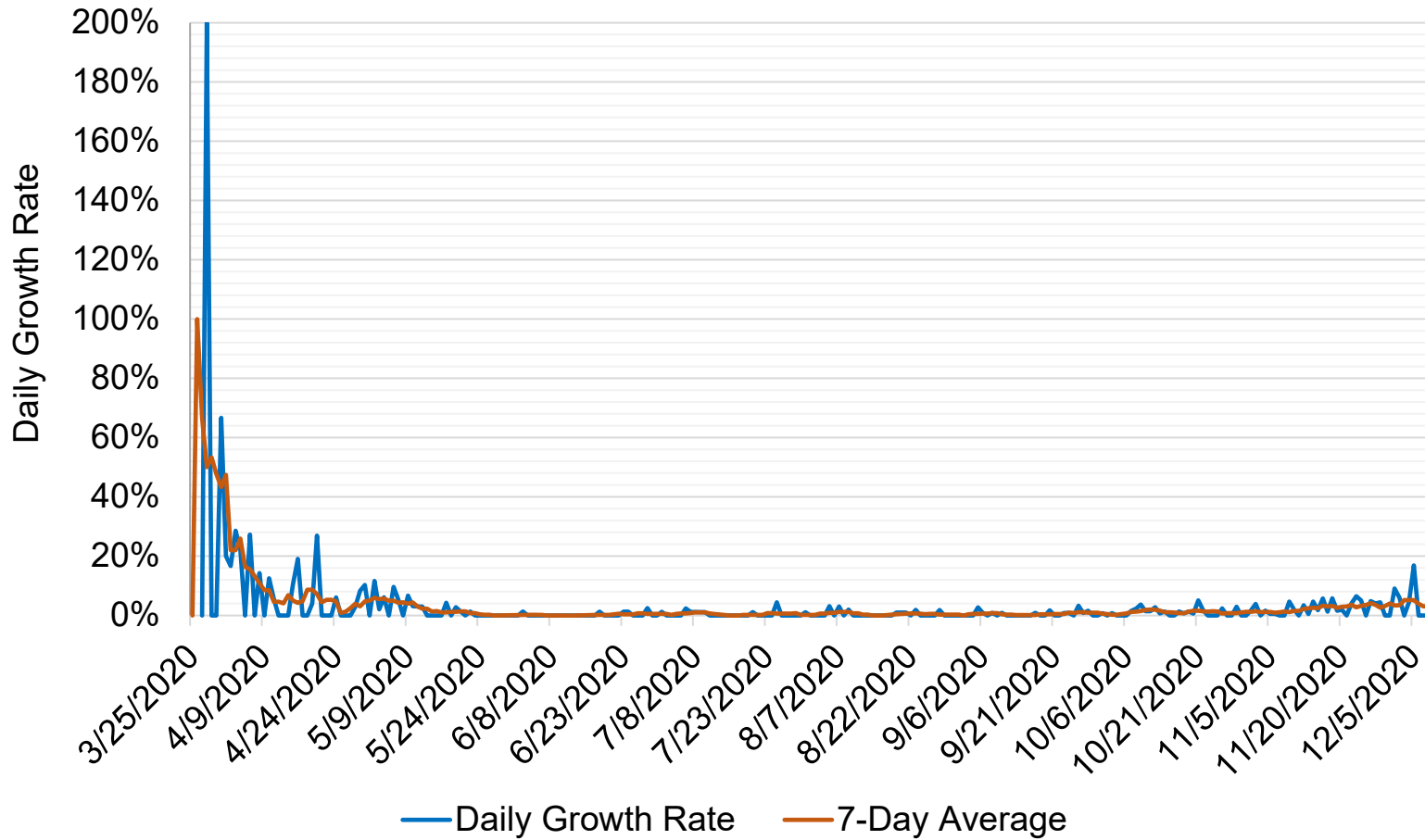




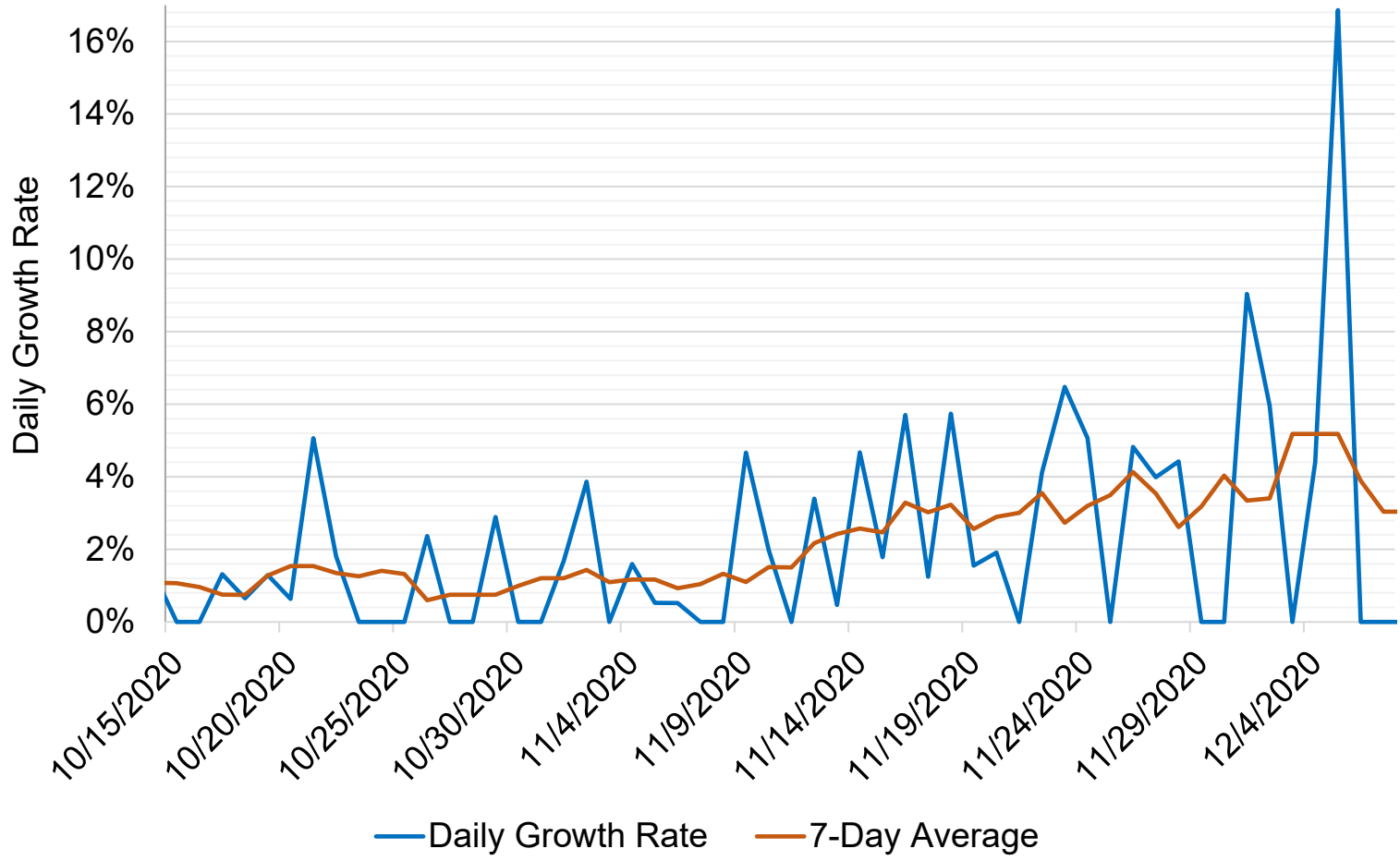
New Cases by Day and Seven-Day Average



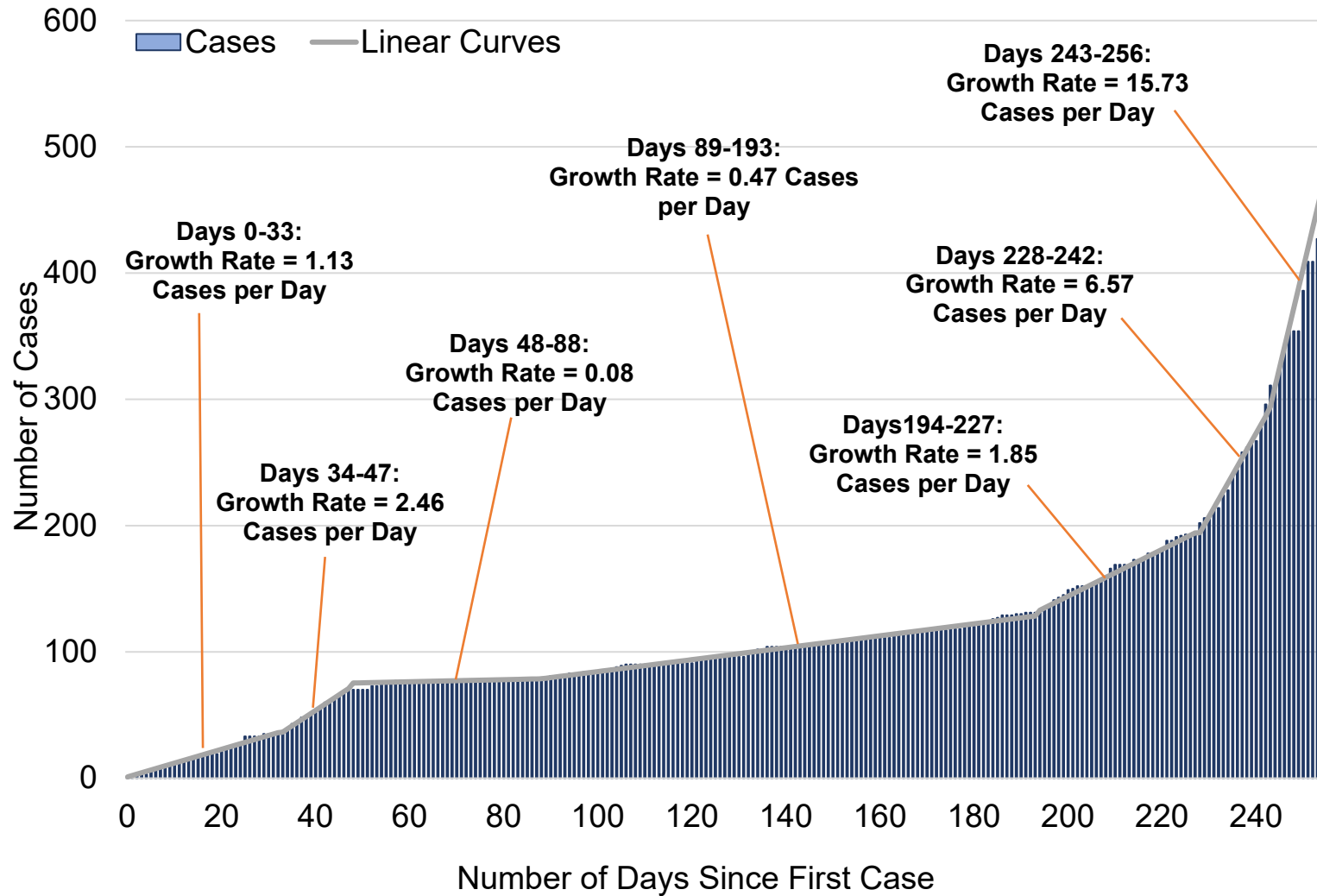
Daily Growth Rate and 7-Day Average Growth Rate



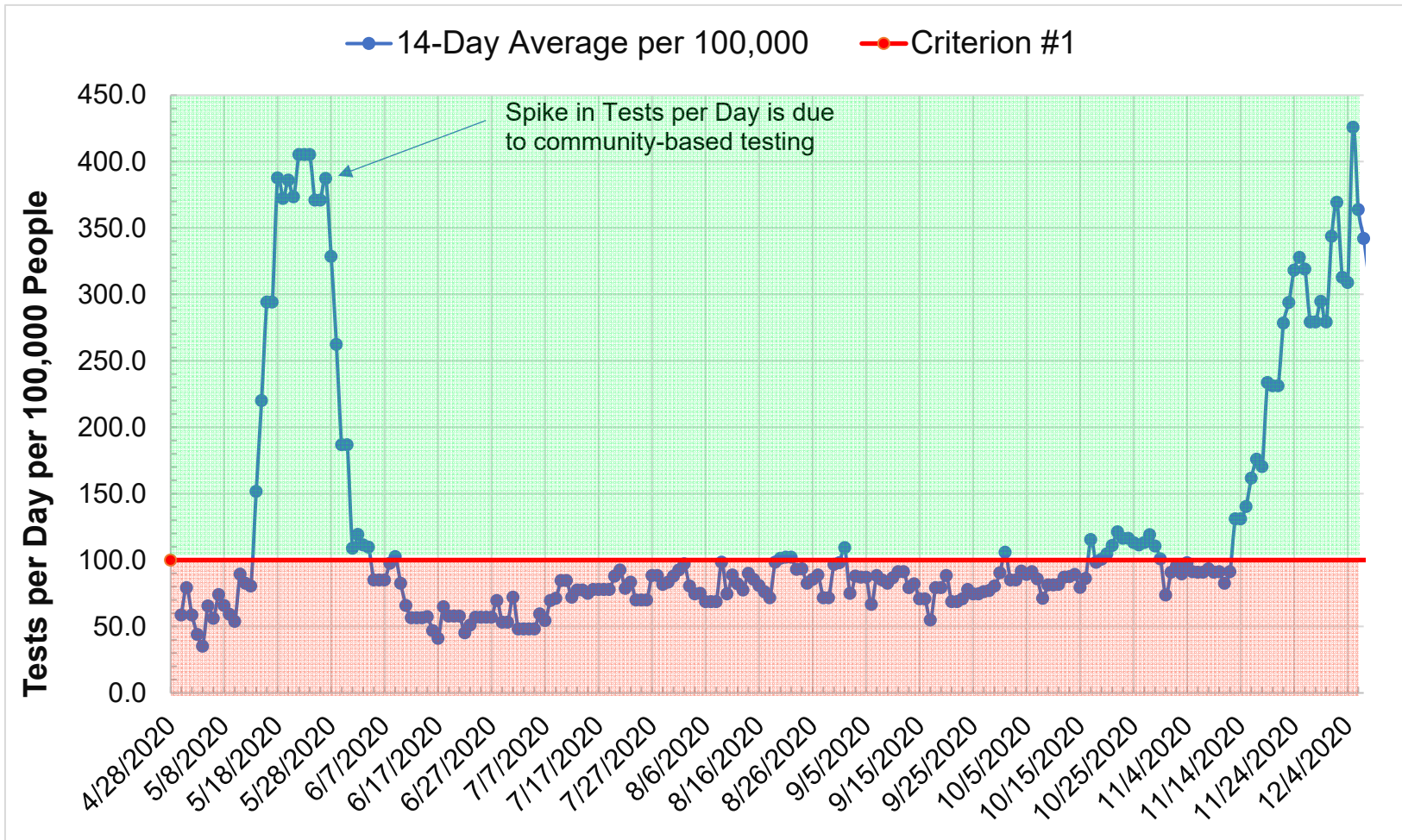
**Daily Growth Rate and 7-Day Average Growth Rate
October 15, 2020 to Present**



Cumulative Cases by Day

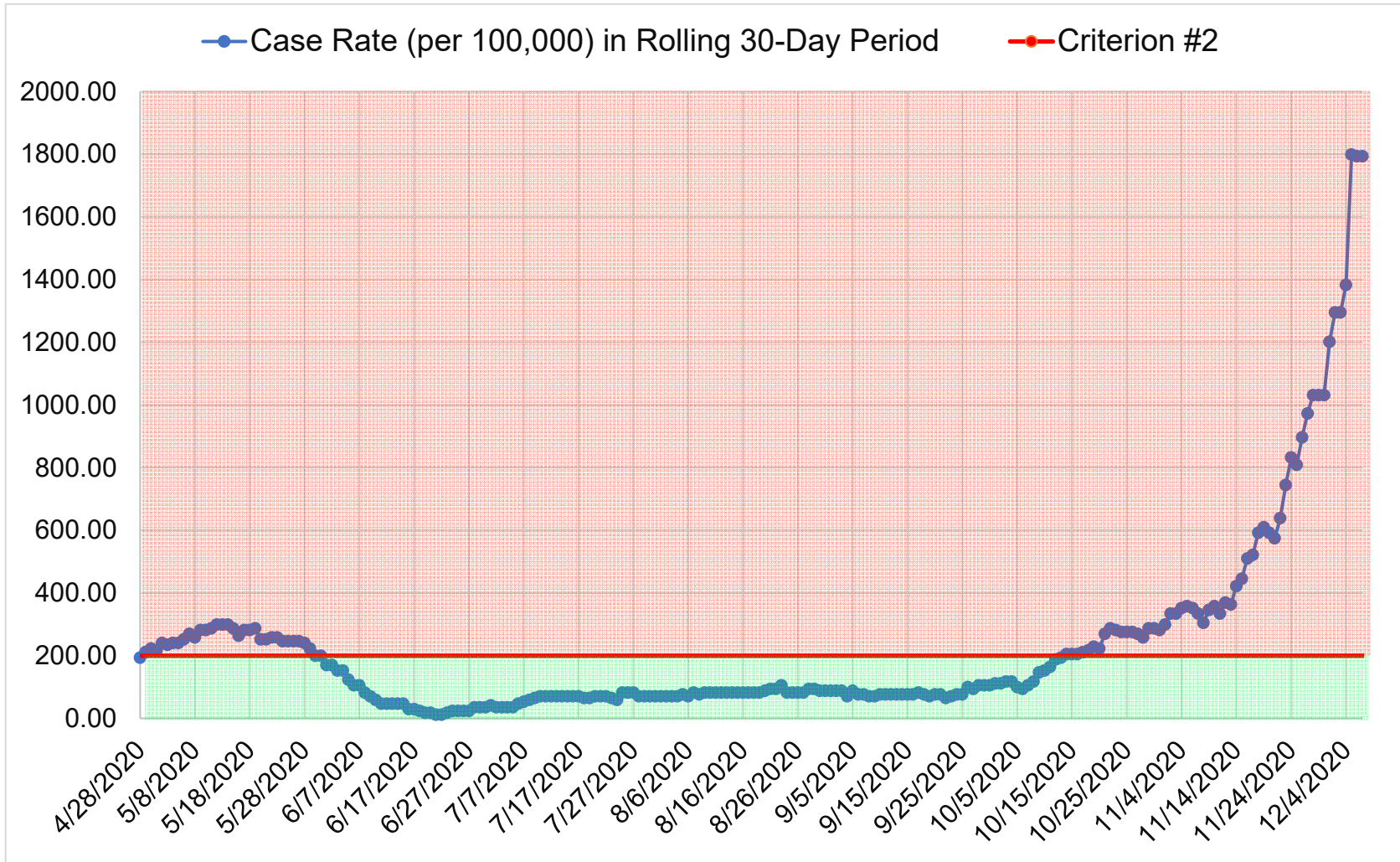


Fail If: Average number of tests per day per 100,000 people (14-Day Average with 7-Day Lag) < 100



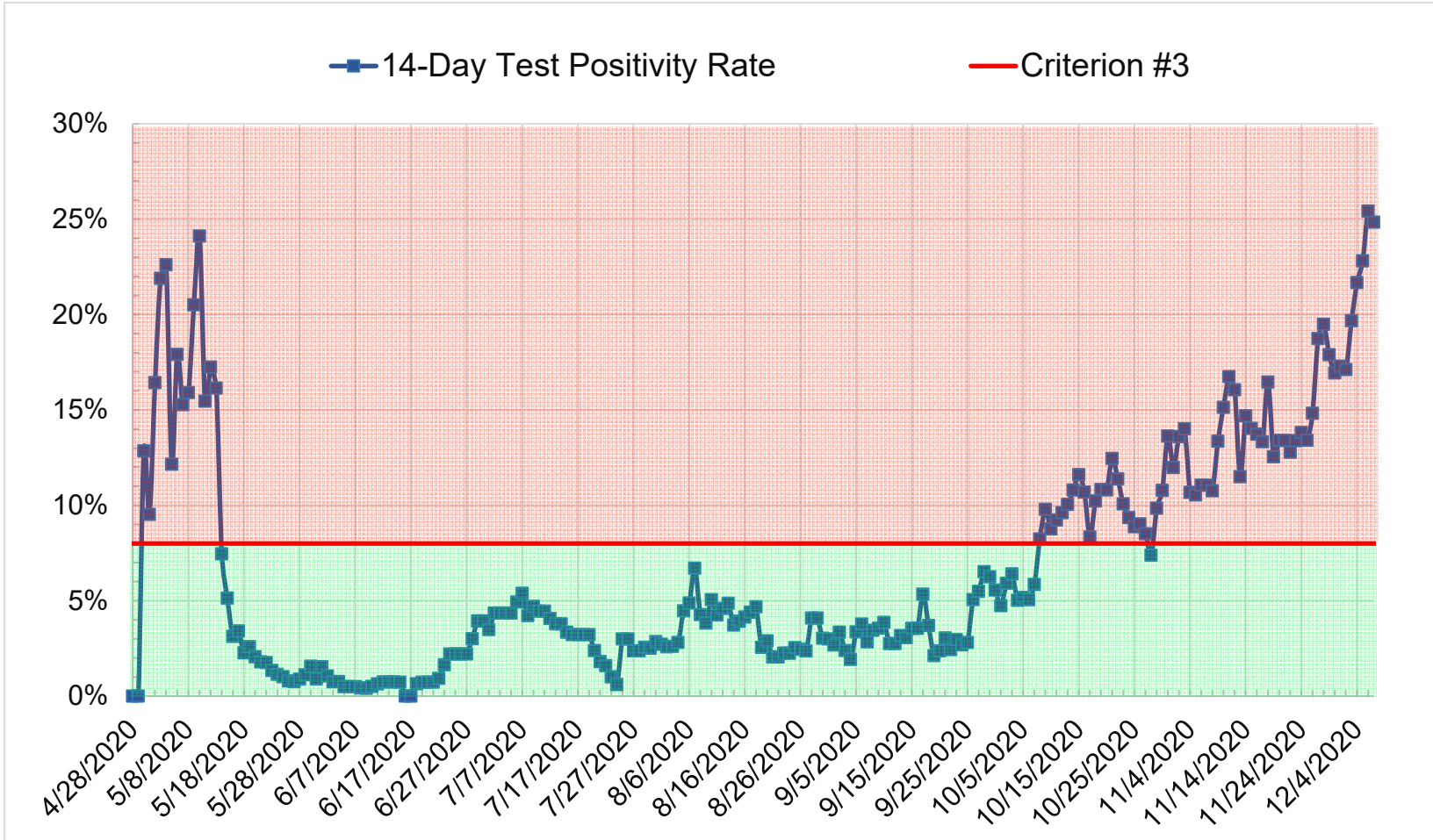
PASS

Fail If: Case Rate per 100,000 (Total in 30-day period) > 200



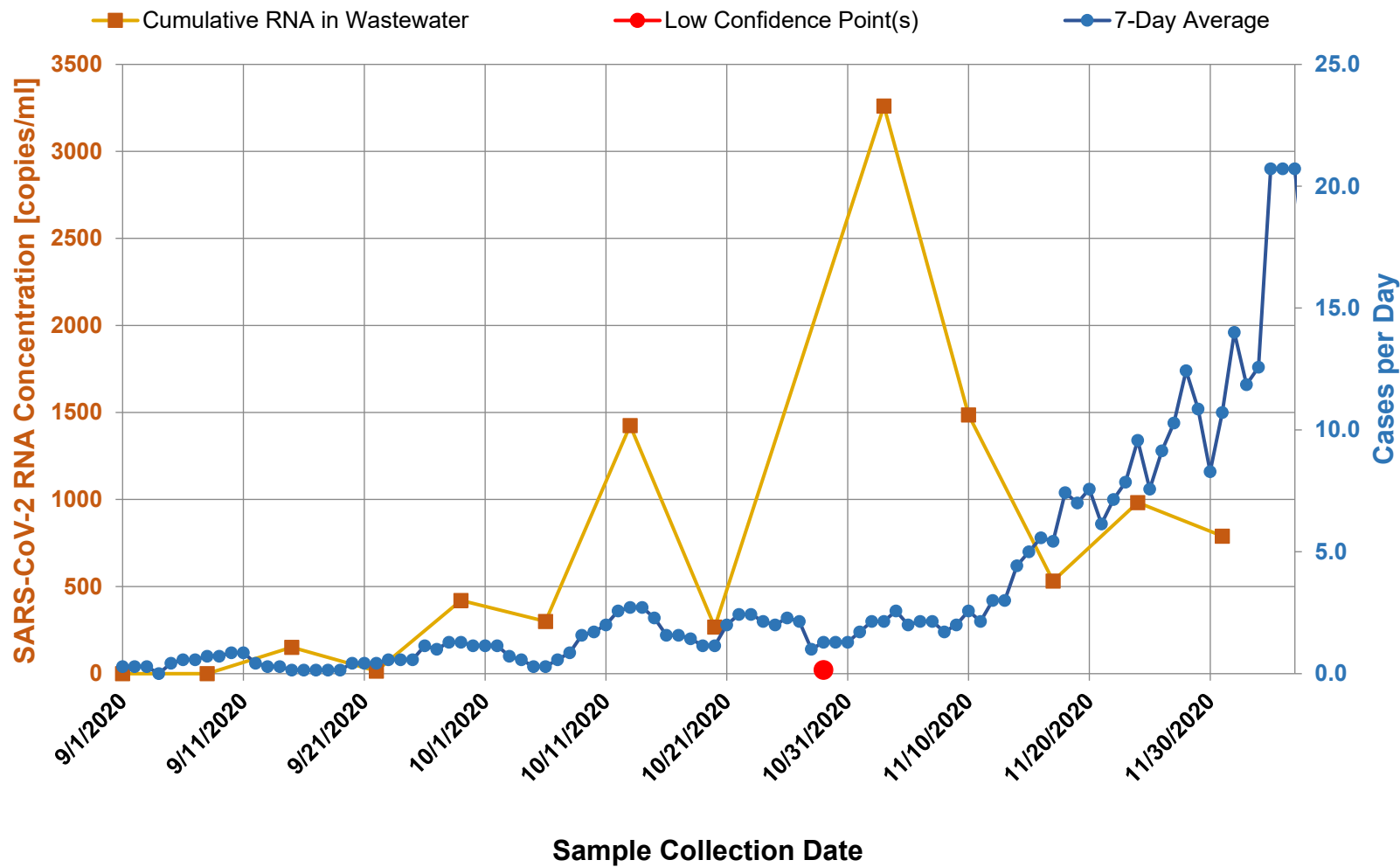
FAIL

Fail If: Case Rate per 100,000 (Criterion #2) > 50 AND Testing Positivity > 8.0%



FAIL

Wastewater Testing



Wastewater Sample Results

- Treatment Plant
- East National
- West National / Highway 95
- Warmouth/Railroad Sub/Skyland Sub
- Melarkey/Harmony/Bridge/Mizpah
- Lowry High School Area
- Cumulative RNA in Wastewater

SARS-CoV-2 RNA Concentration [copies/ml]

